



Turntables Manual and Airmotor Driven

WARNING: Read instructions for proper care in handling and operation. Use in Well Ventilated Area to remove fumes, dust and overspray from materials being sprayed. Consult the Material Safety Data Sheet supplied for the spray material. Follow all safety precautions. Secure airhose wrench tight for safety.
Maximum Air Pressure 100 P.S.I.

AIRMOTOR TURNTABLE 4-14, 14" Diameter Aluminum Top:

Speed control valve and oiler are standard. Speeds are adjustable from 5 to 25 R.P.M. Maximum capacity: Hand and foot valves to actuate Airmotor Turntable are an available option. Foot valves are for intermittent use. Maximum capacity: 100 lbs.

Bench Type

- 4-14CCW** Counter Clockwise Rotation
- Shipping Weight: 66 lbs. (29.7kg)

AIRMOTOR TURNTABLE F59-12-9, 12" Diameter Steel Top:

This airmotor driven turntable has variable speed with adjustment from 30 to 150 R.P.M. An optional foot valve can be used for operating the turntable intermittently. The top is made of flanged steel. Automatic oiler and noise muffler are standard. Maximum capacity: 100 lbs.

Bench Type

- F59-12-9** 9" High, Counter Clockwise Rotation
- Shipping Weight: 25 lbs. (11.25kg)

MANUAL TURNTABLES – 12" & 18" Diameter Steel Tops:

These manually operated turntables have many uses and are convenient for turning various objects. Made in adjustable and fixed heights for both floor and bench type spray booths. They provide the ideal means for handling work during coating operation. Steel tops with rugged base insure stability. Maximum capacity: 100 lbs.

TL-12 Fixed Height – 12" Diameter Top

- Shipping Weight: 8 lbs. (3.6kg)

TL-18 Fixed Height – 18" Diameter Top

- Shipping Weight: 12 lbs. (5.5kg)

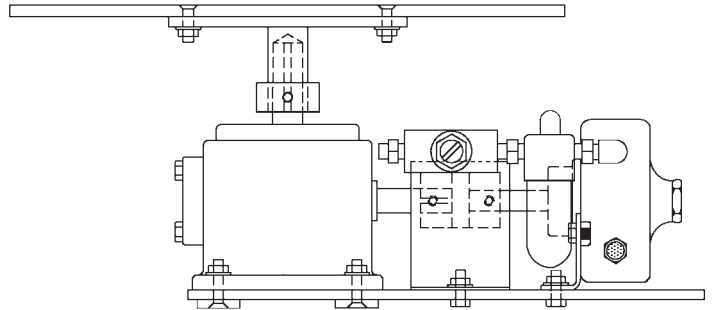
TH-18 Adjustable Stand (21" to 35") 18" Diameter Top

- Shipping Weight: 17 lbs. 8 oz. (8kg)

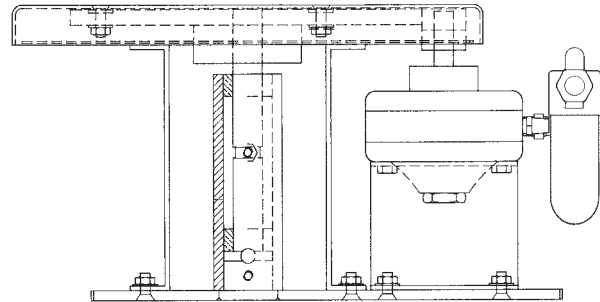
Note: All Shipping Weights are approximate.

Paasche Airbrush Company

4311 North Normandy Avenue
Chicago, IL 60634-1395
Phone: 773-867-9191 • Fax: 773-867-9198
Website: paascheairbrush.com
E-Mail: info@paascheairbrush.com



Airmotor Model: 4-14CCW



Airmotor Model: F59-12-9

Fixed Base Models:

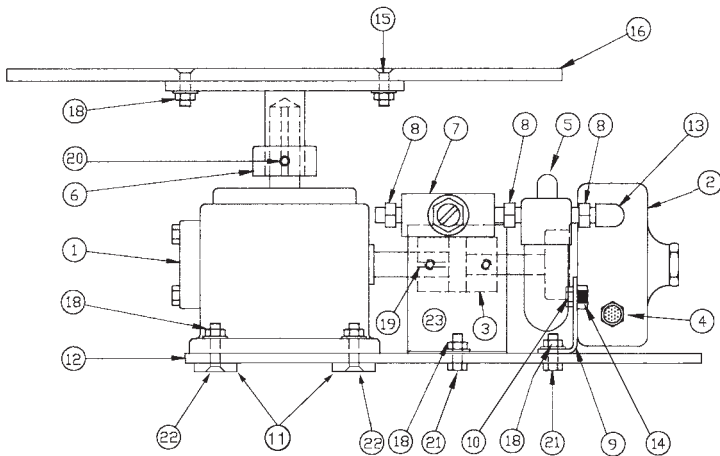
- TL-12
- TL-18



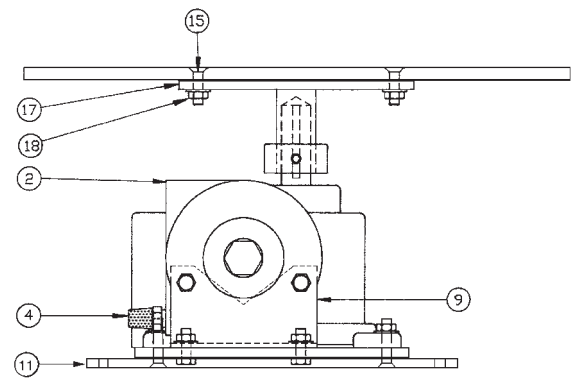
Adjustable Stand Models:

- TH-18

Front View



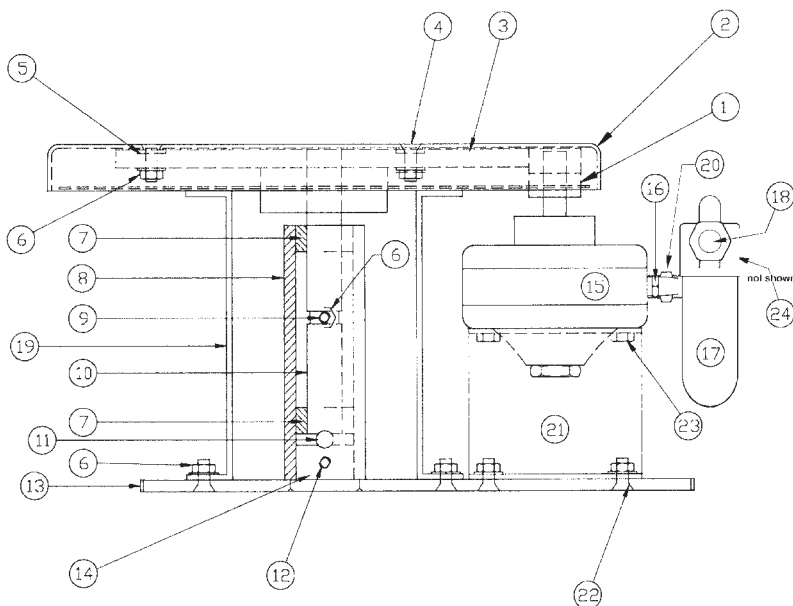
End View



4-14 Airmotor Turntable Component Parts List

No.	Part No.	Description	No.	Part No.	Description	No.	Part No.	Description
1.	913DV-60-RU	Speed Reducer	9.	F793-596-13	Bracket (1)	17.	T-319-3/4	Hub Assembly
2.	A#2	Airmotor CCW	10.	1/4"-28X1"H	Hex Hd. Cap Screw (2)	18.	1/4"-20K	Keyp Nut (10)
3.	L070-1/2X5/8	Flexible Coupling	11.	T-325A	Hold Down Bar (2)	19.	BE-141	Key
4.	M-9	Muffler	12.	T-316-13A	Base Plate	20.	T-352	Dog Point Set Screw
5.	M-10	Oiler	13.	HFL-1/4	90 Elbow	21.	1/4"-20X3/4"H	Hex Hd. Cap Screw (4)
6.	3100	1" B. Die Cast Collar	14.	T-309	Spacer (2)	22.	1/4"-20X1-1/4"FS	Flat Hd. Socket Cap Screw (4)
7.	3250A	Speed Control Valve	15.	D-79	Socket Cap Screw (4)	23.	SM-1236	Guard
8.	HF-33	Coupler (3)	16.	T-320	1/4" Dia. Alum. Plate			

F59-12-9 Airmotor Turntable Component Parts List



No.	Part No.	Description
1.	T-294A	Spur Gear
2.	T-283	12" Dia. Table Top
3.	T-293A	Spur Gear
4.	D-79	Socket Cap Screw (3)
5.	T-296	Spacer (3)
6.	1/4"-20K	Keyp Nut (10)
7.	T-289	Bearing (2)
8.	T-298	Shaft Housing
9.	1/4"-20X3/4"A	Allen Cup Point Set Screw
10.	T-287	Turntable Shaft
11.	3/8"BB	Stainless Ball Bearing
12.	1/4"-20X1/4"A	Allen Cup Point Set Screw
13.	T-284	Turntable Base
14.	T-297	Plug
15.	A#2	Airmotor CCW
16.	M-9	Muffler
17.	M-10	Oiler
18.	ANV-2	1/4" Needle Valve
19.	T-350	Guard
20.	HF-33	Coupler
21.	T-285	Airmotor Mtg. Brackets (2)
22.	1/4"-20X5/8"FS	Flat Hd. Socket Cap Screw (6)
23.	1/4"-28X1"H	Hex Hd. Cap Screw (4)
24.	HF-1/4-90	Elbow (2)