

Paasche®

# LFC Flock Gun with Quart Aluminum Cup

## OPERATING INSTRUCTIONS & REPLACEMENT PARTS

### FLOCK GUN USES:

Flock is being used for decorative purposes and functional applications. New uses are being discovered daily in utilizing this finishing material.

When flock is applied to toys, novelties, printed matter, scenic backgrounds and window displays, the velour finish is attractive and lasting.

Flock is employed for sound-deadening, as a build-up for shock absorption, for felt like non-mar surface protection and for gasket seal.

Flock is cotton, wool, rayon or other natural or synthetic fibers cut to the lengths of 1/64", 1/32" or 1/16". Longer fibers are not recommended for the **LFC Flock Gun**. The binder or adhesive is a silk screen process color or a special adhesive. Both flock and binder are obtainable at leading paint supply stores. Binder colors vary from the deepest black to delicate pastel shades. For good matches binder colors should be the same shade as flock used. By varying binder shades, novel tones can be obtained.

### DIRECTIONS . . .

1. Before connecting air hose from air supply to air inlet of flock gun, blow out airline to remove any moisture and other foreign matter. For art, display and small production flocking for which the **LFC Flock Gun** is designed, use Paasche's **D Air Compressor W/Switch**. For high speed work, a larger Air Compressor is required.
2. Fill cup three-quarters full with dry flock. Be sure it is dry; damp flock will nest and may cause clogging of the gun. For satisfactory operation of gun it is essential that

**WARNING:** Spray materials may be harmful if inhaled or allowed to come into contact with the skin or eyes. Consult the product label and Material Safety Data Sheet supplied for the spray materials being used. Follow all safety precautions. Use equipment in Well Ventilated Area to remove flammable or explosive fumes, dust or overspray. Regular maintenance checks for material residue must be performed to remove any fire or explosion hazard. Exhaust fans should be checked for build-up and kept clean. Filters must be changed frequently and disposed of properly. Never use glass containers.  
**MAXIMUM AIR PRESSURE 75 P.S.I.**

air be dry. To assure clean, dry air, a Paasche **R2-1/4M Regulator & Condenser Unit** with manual drain is recommended.

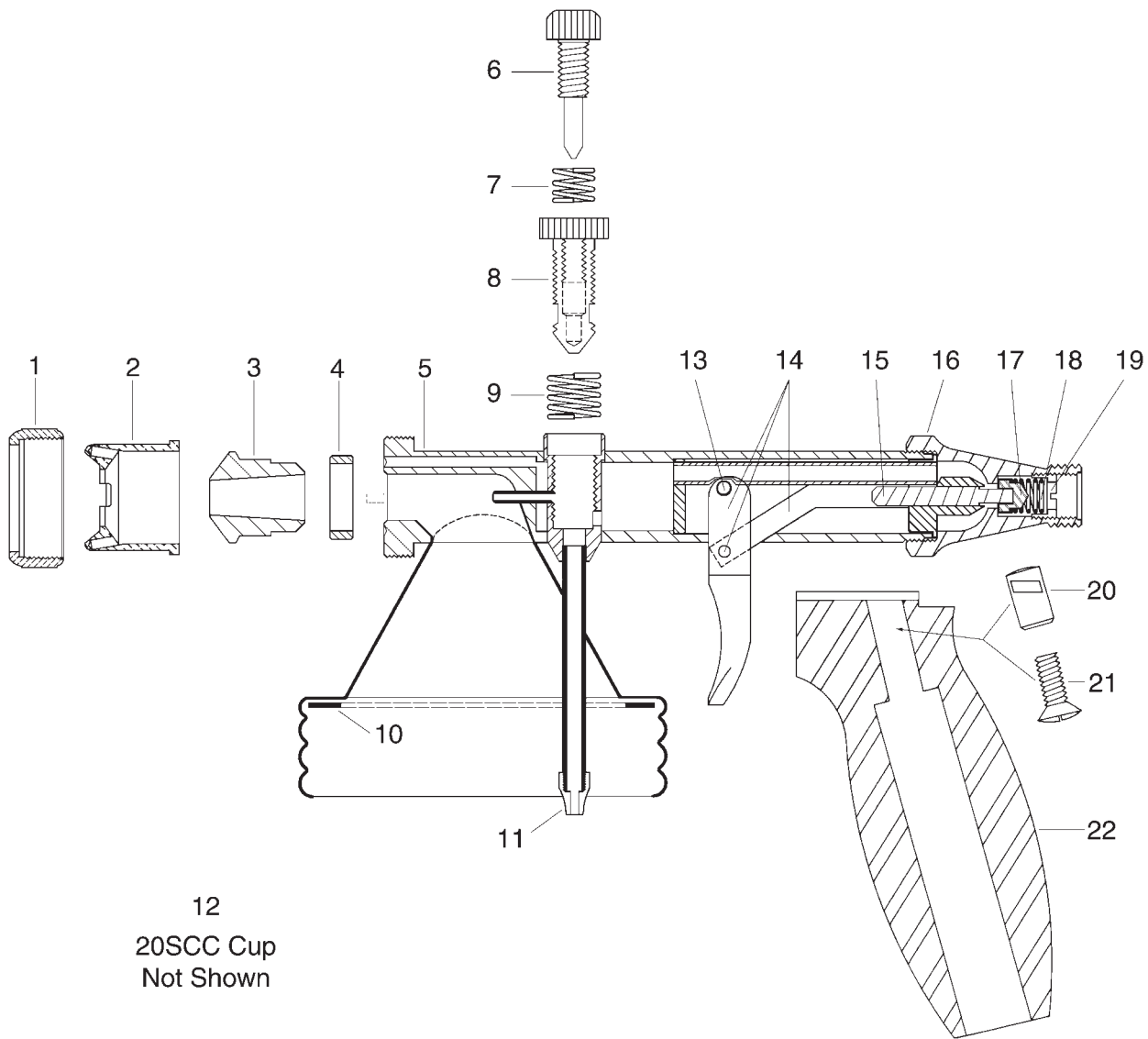
3. Screw cup onto gun. Make sure gasket is in position and screw cover is on tight.
4. Adjust **LF-61 Fan Guard** for round or fan spray.
5. For spray adjustment, the **LF-40 Jet Adjusting Screw** controls the amount of air blowing flock through the multiplehead. When turned clockwise, it will decrease the air flow.
6. Start Air Compressor, open air line valve, pull trigger and regulate **LF-31 Agitator Screw** until agitation is sufficient to obtain the desired flock application.
7. When applying the flock, direct the spray at several different angles to obtain good coverage. Release trigger at end of each stroke to save material and assure uniform coverage.

### OPERATION SUGGESTIONS . . .

Binder may be applied with models **AUFB** and **BUFB Spray Guns** or **L Sprayer**. They assure uniform application of material.

For economic, sanitary and safety reasons, a **CB or FB Ventilating Flock Reclaiming Booth** should be used for recovering unused flock and removing dust and fumes as illustrated in Paasche's Industrial Catalog.

**Paasche Airbrush Company**  
4311 North Normandy Avenue  
Chicago, IL 60634-1395  
**Phone:** 773-867-9191 • **Fax:** 773-867-9198  
**Website:** [paascheairbrush.com](http://paascheairbrush.com)  
**E-Mail:** [info@paascheairbrush.com](mailto:info@paascheairbrush.com)



## LFC FLOCK GUN COMPONENTS

| <u>No.</u> | <u>Part No.</u> | <u>Description</u>           | <u>No.</u> | <u>Part No.</u> | <u>Description</u>     |
|------------|-----------------|------------------------------|------------|-----------------|------------------------|
| 1.         | <b>BU-12</b>    | Aircap Nut                   | 13.        | <b>U-40</b>     | Trigger Screw          |
| 2.         | <b>LF-61</b>    | Fan Guard                    | 14.        | <b>L-76</b>     | Trigger & Rod Assembly |
| 3.         | <b>LF-60A</b>   | Aircap Body                  | 15.        | <b>L-83</b>     | Piston Rod             |
| 4.         | <b>LF-62</b>    | Friction Ring                | 16.        | <b>U-49A</b>    | Valve Casing           |
| 5.         | <b>LF-53B</b>   | Shell Assembly <b>(only)</b> | 17.        | <b>U-154P</b>   | Air Valve Head         |
| 6.         | <b>LF-40</b>    | Jet Adjusting Screw          | 18.        | <b>U-1853</b>   | Air Valve Spring       |
| 7.         | <b>LF-42</b>    | Shell Jet Spring             | 19.        | <b>U-48</b>     | Strainer Nut           |
| 8.         | <b>LF-31</b>    | Agitator Adjusting Screw     | 20.        | <b>L-85</b>     | Handle Lug             |
| 9.         | <b>LF-41</b>    | Agitator Adjusting Spring    | 21.        | <b>L-84</b>     | Handle Bolt            |
| 10.        | <b>2-G</b>      | Gasket                       | 22.        | <b>L-86</b>     | Handle                 |
| 11.        | <b>LF-13</b>    | Air Jet Tip                  |            |                 |                        |
| 12.        | <b>20SCC</b>    | Quart Aluminum Cup           |            |                 |                        |