



# GT-25 Paint Tank

**WARNING:** Please read and save these instructions. Read carefully before attempting to assemble, install, operate or maintain the product described. Protect yourself and others by observing all safety information. Failure to comply with instructions could result in personal injury and/or property damage! Retain instructions for future reference.  
**DO NOT PRESSURIZE TANK OVER 60 PSI.**

## Description

This paint tank is designed for large volume projects using spray guns and paint rollers. The tank is capable of holding 2.5 gallons of bulk paint or a 1 gallon can of paint may be placed directly inside the tank.

Basic construction of the unit consists of a heavy deep drawn one piece steel tank, die cast aluminum tank lid and eyebolt clamps. The unit is equipped with a pressure regulator, gauge, safety relief valve, material hose and air line connectors. A convenient carrying handle allows attachment of the unit to the rung of a ladder or scaffolding to facilitate house or barn spraying operations.

## Safety Guidelines

This manual contains information that is very important to know and understand. This information is provided for **SAFETY** and to **PREVENT EQUIPMENT PROBLEMS**. To help recognize this information, observe the following symbols.

**⚠ DANGER** *Danger indicates an imminently hazardous situation which, if not avoided, WILL result in death or serious injury.*

**⚠ WARNING** *Warning indicates a potentially hazardous situation which, if not avoided, COULD result in death or serious injury.*

**⚠ CAUTION** *Caution indicates a potentially hazardous situation which, if not avoided, MAY result in minor or moderate injury.*

**⚠ NOTICE** *Notice indicates important information, that if not followed, may cause damage to equipment.*

## Unpacking

After unpacking the unit, inspect carefully for any damage that may have occurred during transit. Make sure to tighten fittings, bolts, etc., before putting unit into service.

**⚠ WARNING** *Do not operate unit if damaged during shipping, handling or use. Damage may result in bursting and cause injury or property damage.*

## General Safety Information

Since the paint tank and other components used, (air compressor, material pump, spray guns, filters, lubricators, hoses, etc.) make up a high pressure pumping system, the following safety precautions must be observed at all times:

1. Read all manuals included with this product carefully. Be thoroughly familiar with the controls and the proper use of the equipment.



2. Follow all local electrical and safety codes, as well as the National Electrical Code (NEC) and in the United States, the Occupational Safety and Health Act (OSHA).
3. **Do not pressurize tank over 60 psi.**
4. Do not exceed the pressure rating of any component in the system.
5. Be certain that pressure regulator and safety valve are clean and in proper working order before using the paint tank.
6. Be certain that the air supply line is at zero psi and pressure regulator is turned off before connecting tank to air supply.
7. Make sure all feed lines, clamps and spray guns are secure before turning air supply on.
8. Release all pressure within the system before attempting to service any component.
9. Protect material lines and air lines from damage or puncture.
10. Never point a spray gun at yourself or at any other person. Accidental discharge may result in serious injury.
11. Check hoses for weak or worn condition before each use, making certain that all connections are secure.

## Specifications

Tank Capacity	Tank I.D. Dimensions	Overall Dimensions	Weight (Empty)	Paint hose Material	Maximum Working Pressure
1 Gallon can or 2.5 Gal. bulk	8.5" Dia. x 11"	12" x 12" x 22"	12 lbs.		60 psi

## General Safety Information (Cont.)

12. Always shut off air pressure at source and bleed off all pressure in paint tank by turning pressure release valve before loosening knobs.
13. Regularly check to be sure gauge and regulator are functioning correctly. Also check that no paint or other deposits are in the safety valve inlet. In the event more than 60 psi is applied to the tank and the safety valve is clogged, the higher pressure could damage the tank or result in injury.

### **▲WARNING**

*Do not spray flammable materials in vicinity of open flame or near ignition sources including the compressor unit.*



14. Do not smoke when spraying paint, insecticides, or other flammable substances.
15. Use a face mask/respirator when spraying and spray in a well ventilated area to prevent health and fire hazards.
16. Do not direct paint or other sprayed material at the compressor. Locate compressor as far away from the spraying area as possible to minimize overspray accumulation on the compressor.



17. When spraying or cleaning with solvents or toxic chemicals, follow the instructions provided by the chemical manufacturer.

**▲DANGER** *Failure to follow instructions on proper assembly and use of a paint tank may possibly result in damage to property or personal injury. This unit must be assembled as indicated in these instructions. Only parts supplied with this unit should be used. These parts are safety performance engineered. Use only OEM replacement components.*

### EQUIPMENT USE

This paint tank is designed to be used with a spray gun.

### TO USE A SPRAY GUN

1. Install the two hose connectors into the remaining ports of the tank regulator.
2. Attach the air supply hose (not Included) to the 1/4" NPT air inlet connector of regulator (back side of arrow).

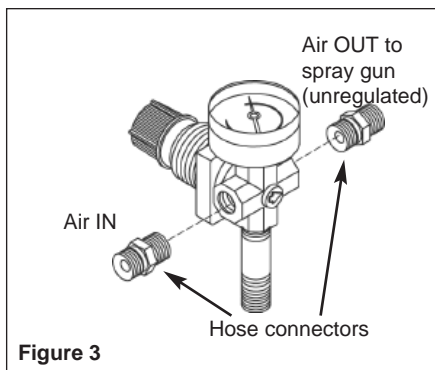


Figure 3

3. Attach an air hose between the regulator out port and the spray gun air inlet.

**NOTE:** A 15 ft. air hose and 15 ft. material hose between the paint tank and spray gun is recommended. Up to 25 ft. of air hose may be used between the paint tank and the compressor. A longer length may create a large pressure drop.

## Operation

1. Before using the tank for the first time, the seal and bracket position should be established by pre-pressurizing the tank.
  - a. Connect the material hose to the spray gun.
  - b. Connect the air hose from regulator to the spray gun or cap.
  - c. Before filling the tank with paint material, evenly tighten the knobs so that the lid is secure and sealed.
  - d. Close the paint tank regulator by turning fully counterclockwise, then open the air regulator on the source to deliver air to the paint tank regulator.
  - e. Increase paint tank pressure by turning the knob clockwise until 30 psi reads on the tank regulator gauge.
  - f. Check for leaks in the system. If a fitting leaks, depressurize the tank by shutting off the air at the air source regulator and turning the knob on the pressure release valve until air no longer hisses from it. Tighten the leaking fitting, then open the air source regulator to deliver 30 psi into the paint tank

and material hose.

g. Depressurize system by shutting off air supply, then gently turning the knob on the pressure release valve to relieve the pressure in the system.

- The tank may now be filled with material. Before filling, thoroughly mix and strain the paint to remove skins or undissolved particles which might otherwise impede the flow of material through the hose and gun. A one gallon can of paint can be set inside the tank instead of pouring the paint into the tank.

**CAUTION**

*Never use this paint tank with materials which contain trichloroethane, chlorinated hydrocarbons, nitrohydrocarbons, esters, amines, or organic*

*compounds. These materials will damage the gasket between the paint tank and lid. A damaged gasket may cause injury and will reduce the efficiency of the paint tank.*

- Place lid on paint tank then tighten knobs evenly and gradually.

**DO NOT USE WRENCH OR PLIERS TO TIGHTEN KNOBS. HAND TIGHTEN ONLY.**

- Turn pressure off at the air source regulator by turning counterclockwise. Pressure gauge should read 0 psi.
- Shut off paint tank regulator by turning counterclockwise.

### SPRAY GUN OPERATION

- Adjust air source regulator pressure required for spraying (usually between 30-40 psi).

- Adjust paint tank regulator to 25-30 psi. More pressure is needed on the material as the gun is moved further above the tank. Normal operating on the paint tank is 5 to 10 psi. When lower pressure is needed, rotate the adjustment counterclockwise until the desired pressure setting is obtained. There is no need to trigger the gun in order to bleed off excess paint pressure. The sprayer may now be used to apply paint.

**CAUTION**

*Do not use over 60 psi in the tank.*

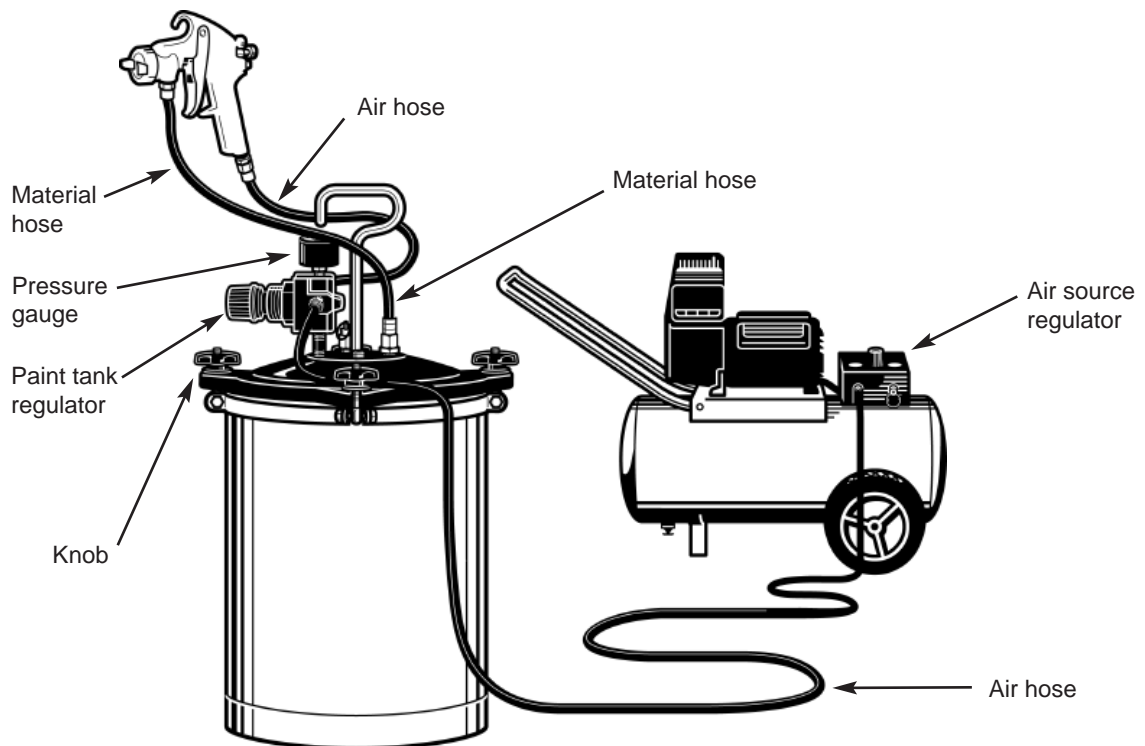


Figure 5

## Operation (Cont.)

## Maintenance

### ▲CAUTION

Always shut off air pressure at source and bleed off all pressure in paint tank by turning the knob on the



pressure release valve before loosening knobs to remove lid.

### CLEANING

**IMPORTANT:** It is very important that the tank material hose and spray gun be cleaned as soon as the spray job is completed.

1. Shut off air tank at air pressure regulator by turning adjusting screw counterclockwise.
2. Open pressure release valve to purge air from tank.
3. Completely cover spray gun nozzle with a soft rag and with air lines pressurized, pull trigger of the gun. This will force paint remaining in the material hose back into the tank.
4. Remove tank lid and pour any remaining paint back into original containers for future use.
5. Using a clean, dry cloth, wipe inside area of tank clean.

### ▲CAUTION

*Never use this paint tank with materials which contain trichloroethane, chlorinated hydrocarbons, nitrohydrocarbons, esters, amines, or organic compounds. These materials will damage the gasket between the paint tank and lid. A damaged gasket may cause injury and will reduce the efficiency of the paint tank.*

6. Pour about 1/2 gallon of paint solvent into the tank. Use the correct type of solvent for the paint being used: mineral spirits for oil base paint, lacquer thinner for lacquer base paints, warm soap water for Latex, etc.
7. Clamp lid onto tank and proceed to spray the proper solvent through spray gun and hose.
8. Following steps 1 through 9 in this section, remove all thinner from hose.
9. Clean lip of tank groove of paint tank lid, and gasket.

### CLEANING THE SAFETY VALVE

Remove the safety valve and clean port (orifice) periodically. Accumulations of paint in the port can prevent proper valve action. Do not disassemble valve or change settings.

### ▲CAUTION

*This component has been factory calibrated and sealed. Do not attempt to disassemble safety valve or alter calibration.*

### ROUTINE

Periodically inspect the tank for leaks around the paint tank lid. If leakage occurs, remove the paint tank lid and clean lip of tank and groove in tank lid. Replace gasket.

## Troubleshooting Chart

Symptom	Possible Cause(s)	Corrective Action
No material coming from tank	1. Plugged hoses or material tube	1. Check hoses and material tube
	2. Damaged regulator diaphragm	2. Check regulator for leaks. Replace diaphragm if necessary
	3. Incorrect hose connections	3. Check connections according to instructions
Air leak at tank lid	1. Damaged gasket	1. Replace gasket
	2. Dirty tank rim	2. Clean rim
	3. Clamping knobs not tightened securely	3. Check tightness (See Operation)

**CAUTION** *Purge all air from tank before adjusting clamp knobs*

### IMPORTANT INSTALLATION INSTRUCTIONS FOR REGULATORS

**DO NOT** install the regulator unit until you have read this entire product information notice.

**EXCEPT** as otherwise specified by manufacturer, this air regulator product is specifically designed for low pressure compressed air service (60 p.s.i. or less), and use with any other fluid (liquid or gas) is a misapplication. For example, use with or injection of certain hazardous liquids or gases in the system (such as alcohol or liquid petroleum gas) could be harmful to the unit or result in a combustible condition or hazardous external leakage. Manufacturer's warranties are void in the event of misapplication and manufacturer assumes no responsibility for any resulting loss. Maximum pressure and temperature ratings are 60 p.s.i. and 120° F (49°C).

**INSTALL** a filter before the regulator for maximum trouble-free operation.

**INSTALL** regulator in any convenient position.

**TO ADJUST** air pressure turn adjustment knob/handle clockwise to raise the regulated pressure, and counterclockwise to lower the regulated pressure.

### IMPORTANT MAINTENANCE INSTRUCTIONS FOR REGULATORS

**TURN** air pressure off and vent air from system before loosening cover.

**For Replacement Parts, call 1-800-621-1907**

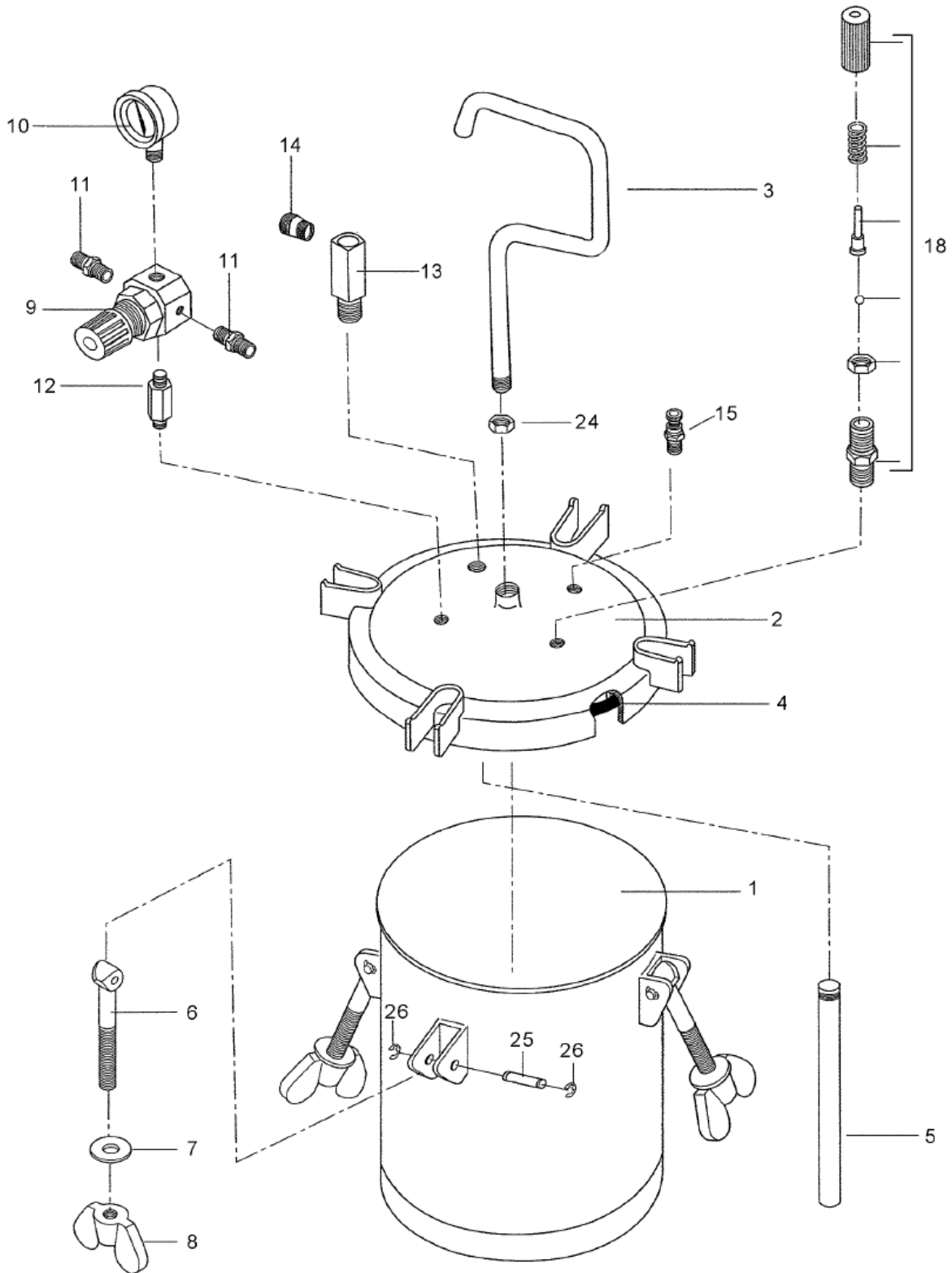


Figure 7 — Replacement Parts Illustration

# Replacement Parts List

Please provide following information:

- Model number
- Serial number (if any)
- Part descriptions and number as shown in parts list

Address parts correspondence to:

Paasche Airbrush Company  
4311 North Normandy Ave.  
Chicago, Illinois 60634-1395

Reference Number	Description	Part Number	Quantity
1	MATERIAL TANK		1
2	LID ASSEMBLY		1
3	HANDLE		1
4	GASKET		1
5	FLUID TUBE		1
6	SWING BOLT		4
7	WASHER		4
8	CLAMPING KNOB		4
9	PRESSURE REGULATOR		1
10	PRESSURE GAUGE		1
11	ADAPTER ( AIR INLET)		2
12	ADAPTER		1
13	MATERIAL OUTLET		1
14	ADAPTER ( FLUID OUTLET)		1
15	RELEASE VALVE		1
18	SAFETY VALVE ASSEMBLY		1
24	NUT		1
25	COTTER PIN		4
26	"C" SNAP RING		8
22	AIRMOTOR AGITATOR (NOT SHOWN) <u>OPTIONAL</u>	#1S-13	1
NOTE: WITH AIRMOTOR AGITATOR OMIT ITEM NO.1 TANK LID HANDLE			

## **▲WARNING**

*This unit must be assembled as indicated in these instructions. Only those parts supplied with this unit should be used. These parts are safety and performance engineered for this paint tank. Use only OEM replacement components.*

## **▲CAUTION**

*Make sure nuts and bolts are properly tightened before pressurizing the tank.*

**Paasche® Limited Warranty**

**Paasche Airbrush Company (“Paasche®”)** warrants the product manufactured by it to be commercially free from any defects in material and workmanship for a one year period after the original date of consumer purchase. This warranty does not extend to any product that has been affected by wear or damage resulting from misuse, abrasion, corrosion, negligence, accident, tampering, faulty installation, inadequate maintenance, damage or casualty, or to any product that has been improperly repaired or altered in any way that affects the condition of operation of the equipment. In the case of accessories or components furnished, but not manufactured by **Paasche®**, **Paasche®** assigns to the buyer, to the extent permitted, the warranty of the manufacturer.

If the product should become defective within the warranty period, we will elect to repair or replace it free of charge, including return transportation provided it is delivered prepaid with proof of purchase (such as cancelled check or register receipt from place of purchase) to:

**Paasche Airbrush Company  
4311 North Normandy Avenue  
Chicago, Illinois 60634-1395**

Any questions regarding warranty service can be directed to **Paasche®** at the address listed previously.

**Paasche®** shall not be liable for any damage, or loss, including, but not limited to, incidental or consequential damage for injury to persons, products, buildings, contents of buildings or other property, or for any other direct, incidental or consequential loss. The Buyer’s exclusive remedy against **Paasche®** for the breach of any obligation under this sales contract, whether derived from warranty or otherwise, shall be limited, as specified herein, to repair or replacement. Some states do not allow the exclusion or limitation of incidental or consequential damages, so the above limitations may not apply to you.

This warranty gives you specific rights, you may also have other rights which vary from state to state.