

D200 Air Compressor

1/6 HP, 110V, 60Hz, 1.5 AMP, .7 CFM @ 20 PSI,
70 PSI, Shipping Weight: 5.2 kgs (11.6 lbs.)

D200-50 Air Compressor

1/6 HP, 220V, 50Hz, 1.0 AMP, .6 CFM @ 20 PSI,
70 PSI, Shipping Weight: 5.2 kgs (11.6 lbs.)

OPERATION: OILLESS - NEEDS NO LUBRICATION

The compressor is maintenance free. To avoid mal-functions and premature wear and tear, the following points should be observed.

1. **WARNING:** Plug the power cord into a 110V.-60Hz or 220V.-50Hz Cycle grounded outlet depending on the **Model purchased**. Do not use an adapter to by-pass the grounding feature. Do not operate compressor in a wet area.
2. Place compressor on a level surface, preferably on the floor.
3. Carrying compressor while operating is not advisable.
4. Do not let the compressor run unnecessarily, i.e. the unit should be switched off when the airbrush is not being used.
5. Always remove the power cord from the electric outlet when making adjustment or changing parts.
6. Always provide plenty of ventilation while spraying.
7. Never smoke or eat while spraying.
8. Wear a respirator and eye protection when spraying.

TROUBLE-SHOOTING:

1. Low air flow

Possible causes:

-Reed valve (#33)
or air valve (#38)
damaged

-Diaphragm (#31) damaged
-6 screws (#42) are too loose
-Air hose leaking

What to do:

-Change the defective air
valve plate or air valve
damaged

-Change the diaphragm
-Tighten the screws
-Check seal, or change

2. Noisy operation

Possible causes:

-6 screws (#42) are too tight

-Bearing fault

What to do:

- Loosen the screws, and
then tighten them equally.
Do not over tighten.
-Return to Factory.

3. Humming but does not work

Possible causes:

-6 screws (#42) are too tight

-Armature fault

What to do:

-Loosen the screws, and
then tighten them equally.
Do not over tighten.
-Return to the Factory.

WARNING: When a flammable liquid is sprayed, there may be danger of fire or explosion especially in a closed room: keep compressor at least 20 feet away from areas where hazardous concentrations of flammable vapors are likely to occur. Disconnect power before servicing.

ATTENTION: Lorsqu'un liquide inflammable est pulvérisé, il peut y avoir danger d'incendie ou d'explosion, spécialement dans une pièce fermée; garder le compresseur à au moins 20 pieds des endroits où des concentrations dangereuses de vapeurs inflammables sont susceptibles de se produire. Débrancher avant toute maintenance.

4. Does not work

Possible causes:

-Armature fault

What to do:

-Return to the Factory.

NOTICE:

If you need to disassemble the compressor, take care to note the position and orientation of the parts to assure the correct re-assembly.

D200 Air Compressor, 110V.,60Hz.



D200-50 Air Compressor, 220V., 50Hz.



Paasche Airbrush Company

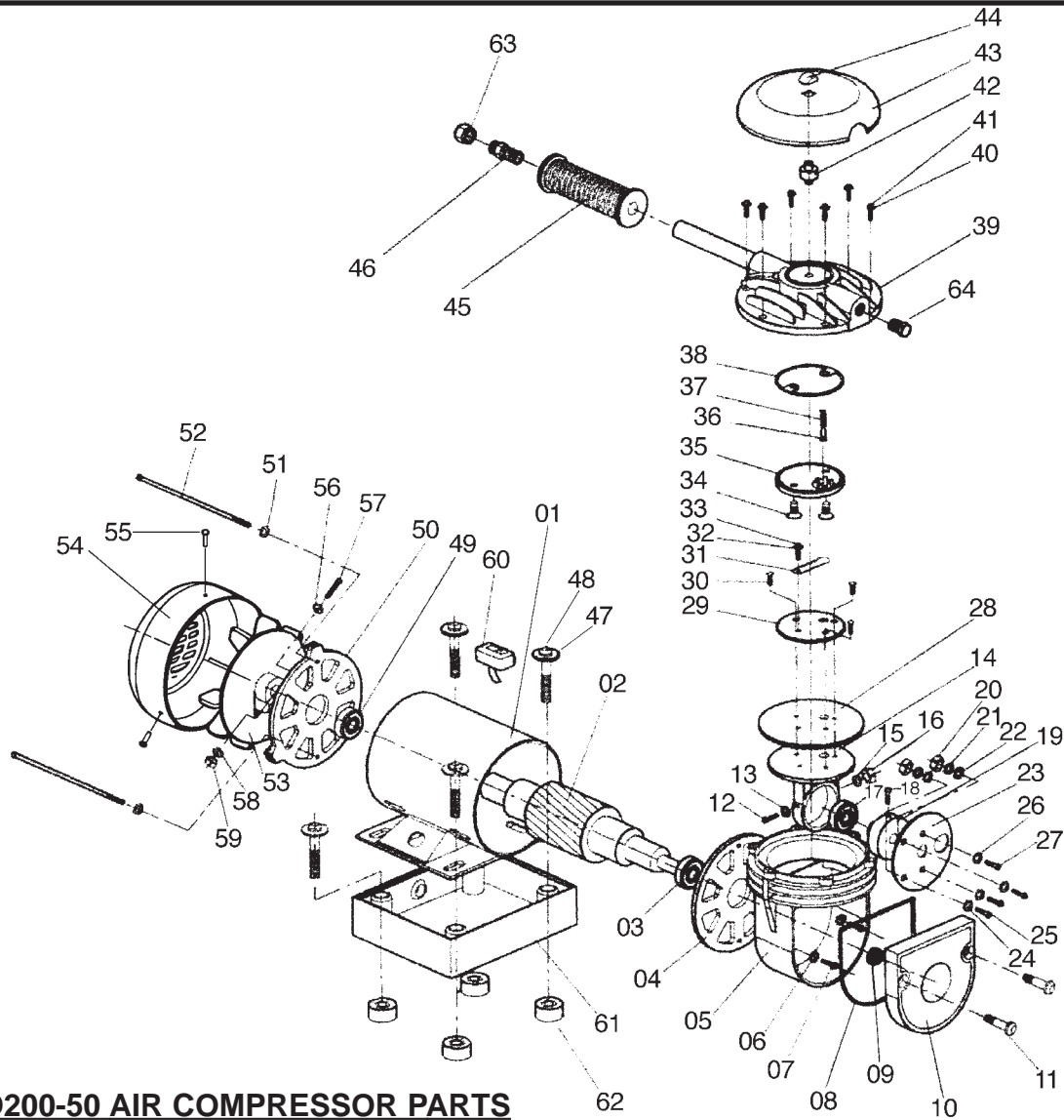
4311 North Normandy
Chicago, IL 60634-1395

Phone: 773-867-9191 • Fax: 773-867-9198

Website: paascheairbrush.com

E-Mail: info@paascheairbrush.com

Manufactured in Taiwan for Paasche



D200 or D200-50 AIR COMPRESSOR PARTS

Part No.	Description	Part No.	Description	Part No.	Description
D200-01	Housing (110V.,60HZ)	D200-24	Washer	D200-48	Screw
D200-01-50	Housing (220V.,50HZ)	D200-25	Screw	D200-49	Bearing
D200-02	Armature	D200-27	Screw	D200-50	Rear Body Cover
D200-03	Bearing	D200-28	Diaphragm	D200-51	Washer
D200-04	Front Body Cover	D200-29	Set Plate	D200-52	Screw
D200-05	Air Tank	D200-30	Screw	D200-53	Motor Fan
D200-06	Washer	D200-31	Air Valve	D200-54	Fan Cover
D200-07	Screw	D200-32	Screw	D200-55	Screw
D200-08	Seal	D200-33	Pan Head Screw	D200-56	Washer
D200-09	Bearing	D200-34	Screw	D200-57	Screw
D200-10	Cover	D200-36	Screw	D200-58	Washer
D200-11	Screw	D200-37	Spring	D200-59	Nut
D200-12	Screw	D200-38	Bolster	D200-60	switch
D200-13	Washer	D200-39	Air Outlet	D200-61	Base
D200-14	Air Tank Bracket	D200-40	Screw	D200-62	Rubber Feet
D200-15	Washer	D200-41	Pan Head Screw	D200-63	Nut
D200-16	Nut	D200-42	Plastic Connector	D200-64	Screw
D200-17	Bearing	D200-43	Cover		
D200-18	Screw	D200-44	Plastic Nut		
D200-19	Eccentric Seat	D200-45	Handle		
D200-20	Nut	D200-46	Connector		
D200-22	Washer	D200-47	Washer		
D200-23	Set Plate				