

## D100 Air Compressor

1/8 HP, 110V, 60Hz, 1.1 AMP, .3 CFM @ 20 P.S.I.,  
 50 PSI, Shipping Weight: 4.7 kgs (10.6 lbs.)

## D100-50 Air Compressor

1/8 HP, 220V, 50Hz, .8 AMP, .3 CFM @ 20 P.S.I.,  
 55 PSI, Shipping Weight: 4.7 kgs (10.6 lbs.)

**WARNING:** When a flammable liquid is sprayed, there may be danger of fire or explosion especially in a closed room: keep compressor at least 20 feet away from areas where hazardous concentrations of flammable vapors are likely to occur. Disconnect power before servicing.  
**ATTENTION:** Lorsqu'un liquide inflammable est pulvérisé, il peut y avoir danger d'incendie ou d'explosion, spécialement dans une pièce fermée; garder le compresseur à au moins 20 pieds des endroits où des concentrations dangereuses de vapeurs inflammables sont susceptibles de se produire. Débrancher avant toute maintenance.

### OPERATION: OILLESS - NEEDS NO LUBRICATION

The compressor is maintenance free. To avoid malfunctions and premature wear and tear, the following points should be observed.

1. **WARNING:** Plug the power cord into a 110V.-60Hz or 220V.-50Hz Cycle grounded outlet depending on the **Model purchased**. Do not use an adapter to by-pass the grounding feature. Do not operate compressor in a wet area.
2. Place compressor on a level surface, preferably on the floor.
3. Carrying compressor while operating is not advisable.
4. Do not let the compressor run unnecessarily, i.e. the unit should be switched off when the airbrush is not being used.
5. Always remove the power cord from the electric outlet when making adjustment or changing parts.
6. Always provide plenty of ventilation while spraying.
7. Never smoke or eat while spraying.
8. Wear a respirator and eye protection when spraying.

### TROUBLE-SHOOTING:

#### 1. Low air flow

Possible causes:

-Reed valve (#33)  
 or air valve (#38)  
 damaged

-Diaphragm (#31) damaged  
 -6 screws (#42) are too loose  
 -Air hose leaking

What to do:

-Change the defective air  
 valve plate or air valve  
 damaged

-Change the diaphragm  
 -Tighten the screws  
 -Check seal, or change

#### 2. Noisy operation

Possible causes:

-6 screws (#42) are too tight

-Bearing fault

What to do:

- Loosen the screws, and  
 then tighten them equally.  
 Do not over tighten.  
 -Return to Factory.

#### 3. Humming but does not work

Possible causes:

-6 screws (#42) are too tight

-Armature fault

What to do:

-Loosen the screws, and  
 then tighten them equally.  
 Do not over tighten.  
 -Return to the Factory.

#### 4. Does not work

Possible causes:

-Armature fault

What to do:

-Return to the Factory.

#### NOTICE:

If you need to disassemble the compressor, take care to note the position and orientation of the parts to assure the correct re-assembly.

### D100 Air Compressor, 110V.,60Hz.



### D100-50 Air Compressor, 220V., 50Hz.



**Paasche Airbrush Company**

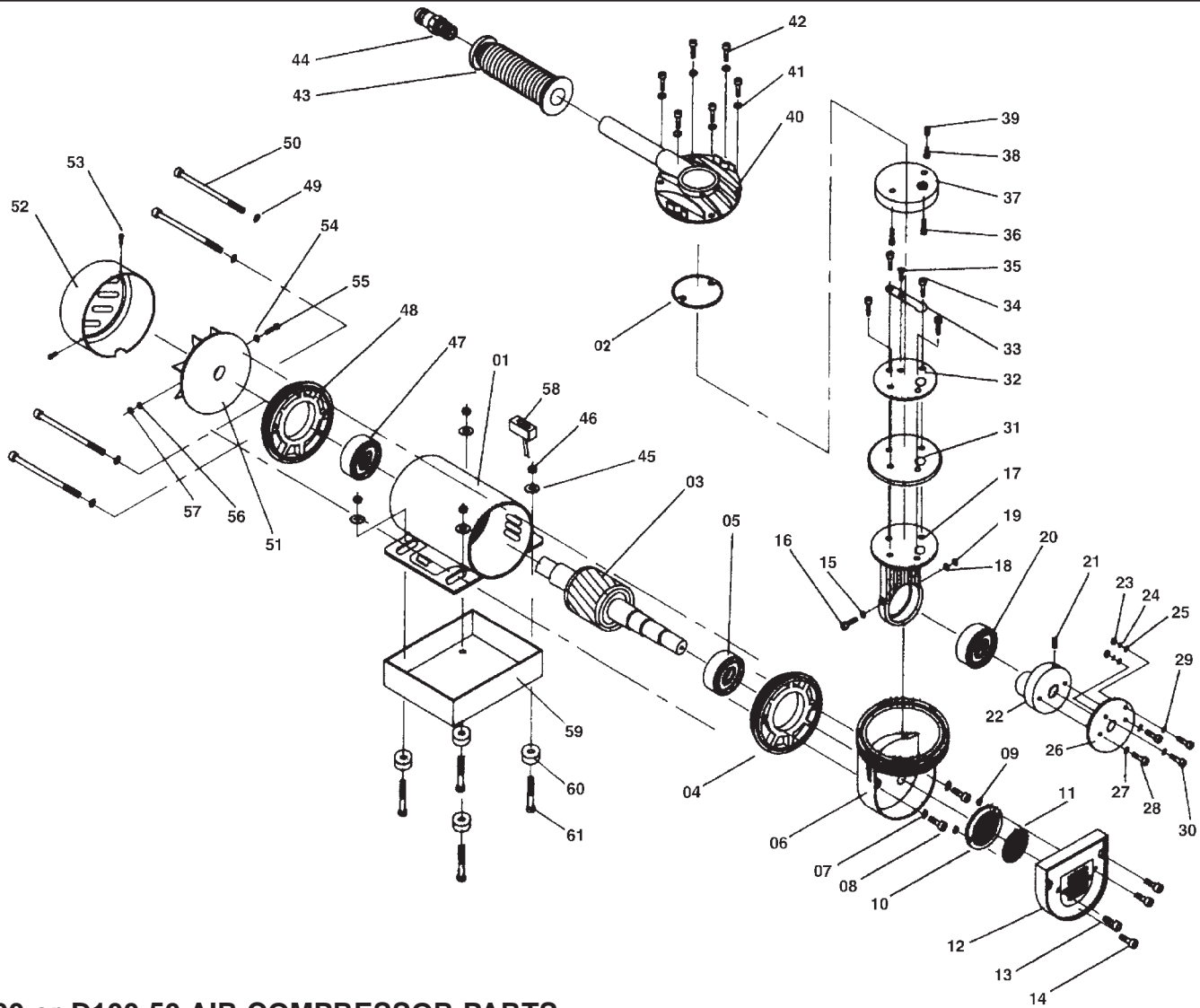
4311 North Normandy  
 Chicago, IL 60634-1395

Phone: 773-867-9191 • Fax: 773-867-9198

Website: [paascheairbrush.com](http://paascheairbrush.com)

E-Mail: [info@paascheairbrush.com](mailto:info@paascheairbrush.com)

Manufactured in Taiwan for Paasche



**D100 or D100-50 AIR COMPRESSOR PARTS**

Part No.	Description	Part No.	Description	Part No.	Description
D3000-01	Housing (110V.,60HZ)	D3000-24	Washer	D3000-48	Rear Body Cover
D3000-01-50	Housing (220V.,50HZ)	D3000-25	Washer	D3000-49	Washer
D3000-02	Bolster	D3000-26	Set Plate	D3000-50	Screw
D3000-03	Armature	D3000-27	Washer	D3000-51	Fan
D3000-04	Front Body Cover	D3000-28	Screw	D3000-52	Fan Cap
D3000-05	Bearing	D3000-29	Washer	D3000-53	Screw
D3000-06	Air Tank	D3000-30	Screw	D3000-54	Washer
D3000-07	Washer	D3000-31	Diaphragm	D3000-55	Screw
D3000-08	Screw	D3000-32	Set Plate	D3000-56	Washer
D3000-09	Nut	D3000-33	Reed Valve	D3000-57	Nut
D3000-10	Silencer	D3000-34	Screw	D3000-58	Switch
D3000-11	Silencer Sponge	D3000-35	Screw	D3000-59	Base
D3000-12	Silencer Cap	D3000-36	Screw	D3000-60	Mounting Pad
D3000-13	Screw	D3000-37	Air Valve Plate (Up)	D3000-61	Screw
D3000-14	Screw	D3000-38	Air Valve		
D3000-15	Washer	D3000-39	Spring		
D3000-16	Screw	D3000-40	Air Outlet		
D3000-17	Air Tank Bracket	D3000-41	Washer		
D3000-18	Washer	D3000-42	Screw		
D3000-19	Nut	D3000-43	Handle		
D3000-20	Bearing	D3000-44	Outlet Screw		
D3000-21	Screw	D3000-45	Washer		
D3000-22	Eccentric Seat	D3000-46	Nut		
D3000-23	Nut	D3000-47	Bearing		