

D Air Compressor 1/4 H.P., 115 V., 60 Cyl.



Model D Diaphragm Compressor was designed with the artist in mind, offering quiet dependable service with sufficient pressure to operate any artist airbrush. Delivers up to 1/2 C.F.M. at 20 p.s.i. (Maximum 40 p.s.i.) and weighs 20 lbs. (Shipping Weight 22 lbs.)

INSTRUCTIONS:

BEFORE OPERATING COMPRESSOR, READ AND FOLLOW DIRECTIONS AS OUTLINED BELOW.

1. The D Compressor is equipped with a 3 wire cord with On/Off Switch and a 1/4 H.P., 115 V.A.C., 1 Phase, 60 cycle motor. **NOTE:** Before plugging in, check to make sure available power is the same as that noted on motor name plate. Turn off switch and remove plug from wall outlet when leaving unit unattended.
2. Connect air hose to air outlet on unit.
3. Plug unit into properly wired electrical receptacle.
4. Hold hose and point loose end away from you. Turn on switch and allow a few moments to blow hose clean of any foreign particles.
5. Turn switch off.
6. Connect airbrush to hose using V-62 Wrench.

Paasche Airbrush Company

4311 North Normandy
Chicago, IL 60634-1395

Phone: 773-867-9191 • Fax: 773-867-9198

Website: paascheairbrush.com

E-Mail: info@paascheairbrush.com

CAUTION: When a flammable liquid is sprayed, there may be danger of fire or explosion especially in a closed room: keep compressor at least 20 feet away from areas where hazardous concentrations of flammable vapors are likely to occur. Compressor may not start when pressure is in the airline. Bleed air by pressing Air Valve Button on Airbrush. Do Not Start and Stop Compressor in Rapid Succession—May Burn Out Motor.

ATTENTION: Lorsqu'un liquide inflammable est pulvérisé, il peut y avoir danger d'incendie ou d'explosion, spécialement dans une pièce fermée; garder le compresseur à au moins 20 pieds des endroits où des concentrations dangereuses de vapeurs inflammables sont susceptibles de se produire.

NOTE: Set compressor on floor while operating, to remove danger of unit falling from an elevated surface, possibly causing damage to unit or injury. To reduce any noticeable vibration or movement; suggest placing compressor on a carpeted surface etc.

Troubleshooting:

1. Motor will not run if:

- a. It is not plugged in.
- b. The switch is defective or in the off position.
- c. There is a blown fuse in house circuit.
- d. There is residual pressure in air line:
 1. Press finger button on airbrush to release pressure

2. Motor runs but has no air pressure if:

- a. The **D-77** Screws are loose or missing.
- b. **D-55, D-54, D-66** are dirty or broken.
- c. The **D-352** Rod is broken.
- d. The **D-56** Diaphragm is worn or cracked.

3. Noisy operation occurs when:

- a. The **D-79** Screw is loose.
- b. The **D-83** Screw is loose.
- c. Connecting Rod Bearing is worn.
- d. Puller or Pusher Washer is broken.
- e. Inlet Filter is not in place.

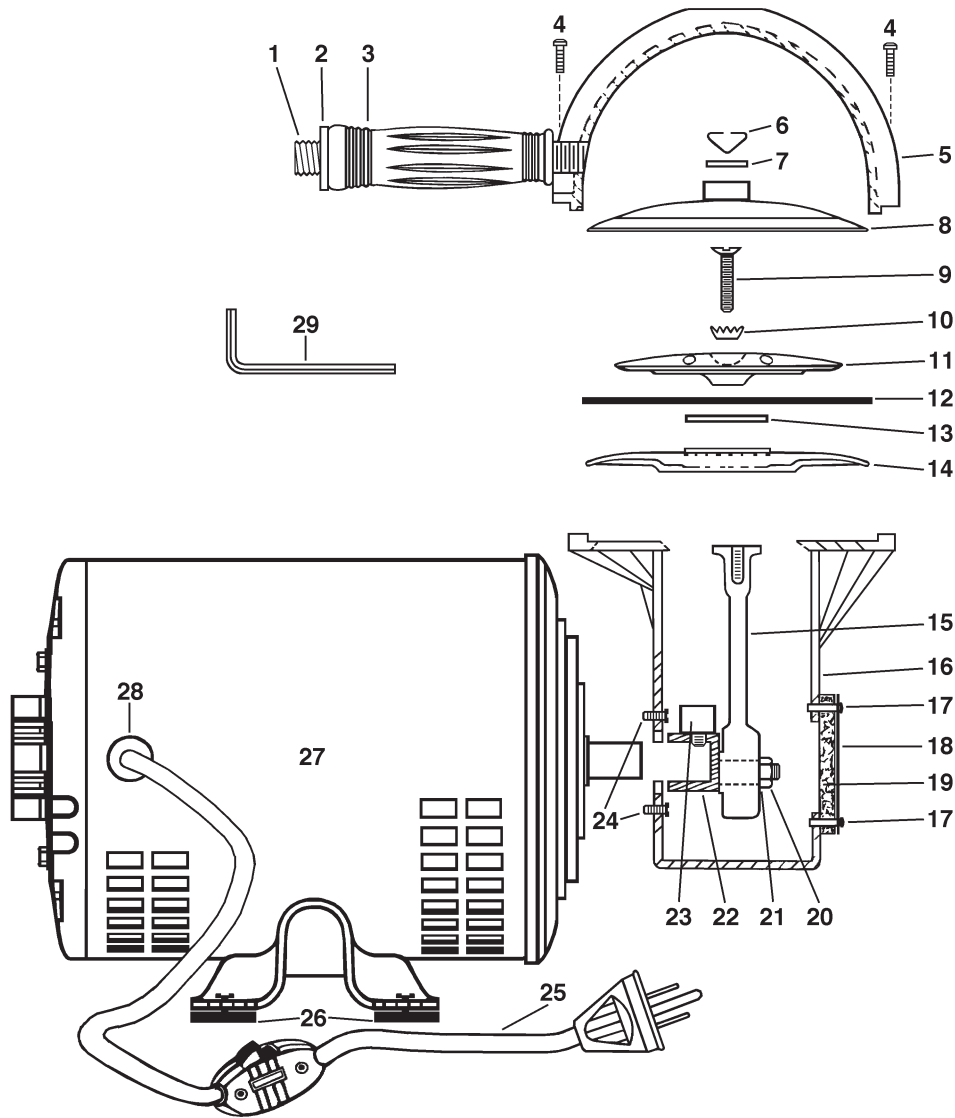
NOTE: When reassembling compressor parts, make sure they are positioned exactly as they were before disassembly.

SERVICE:

1. Clean intake filter weekly. Replace filter if clogged with paint overspray.

D Compressor has sufficient air capacity for the following Paasche Airbrushes, using light fluids:

- Capacity for 2: **F#1, V#1, V#2, VJR#1** or **VJR#2** Airbrushes.
- Capacity for 2: **H#1, H#3, VL#1** or **VL#3** Airbrushes.
- Capacity for 1: **AB, ABL, H#5,** or **VL#5** Airbrush.
- Capacity for 1: **AUFB-0, AURB-0,** or **AURB-1** Spray Gun.
- Capacity for 1: **62-1-3** or **62-2-3** (3 oz.) Sprayers.



No.	Part	Description	No.	Part	Description
1.	D-49	Handle	16.	D-47G	Housing
2.	1400-50	Retaining Ring	17.	D-343	Nylon Fastener (4)
3.	D-50	Handle Sleeve	18.	D-341	Nameplate
4.	D-77	Screw (4)	19.	D-342	Inlet Filter
5.	D-48G	Reservoir	20.	D-80	Nut
6.	D-106	Retaining Spring	21.	L-70	1/4" Shakeproof Lock Washer
7.	D-69N	Exhaust Valve Disc	22.	D-351	Crank Shaft
8.	D-57	Pressure Head	23.	D-83	Counter Weight & Screw
D-88 Connecting Rod & Diaphragm Assem.			24.	D-346	Screw (4)
9.	D-79	Allen Screw	Motor Components		
10.	D-103	Lock Washer	25.	U-2769-6'	Cord and Switch
11.	D-55	Puller Washer	26.	D-336	Grommet, Screw & Nut (4)
12.	D-56	Diaphragm	27.	D-159G	Motor L/Cord
13.	D-66	Intake Valve Disc	28.	D-357	Cord Strain Relief
14.	D-54	Pusher Washer	29.	#532	Allen Wrench
15.	D-352	Connecting Rod & Bearing			