

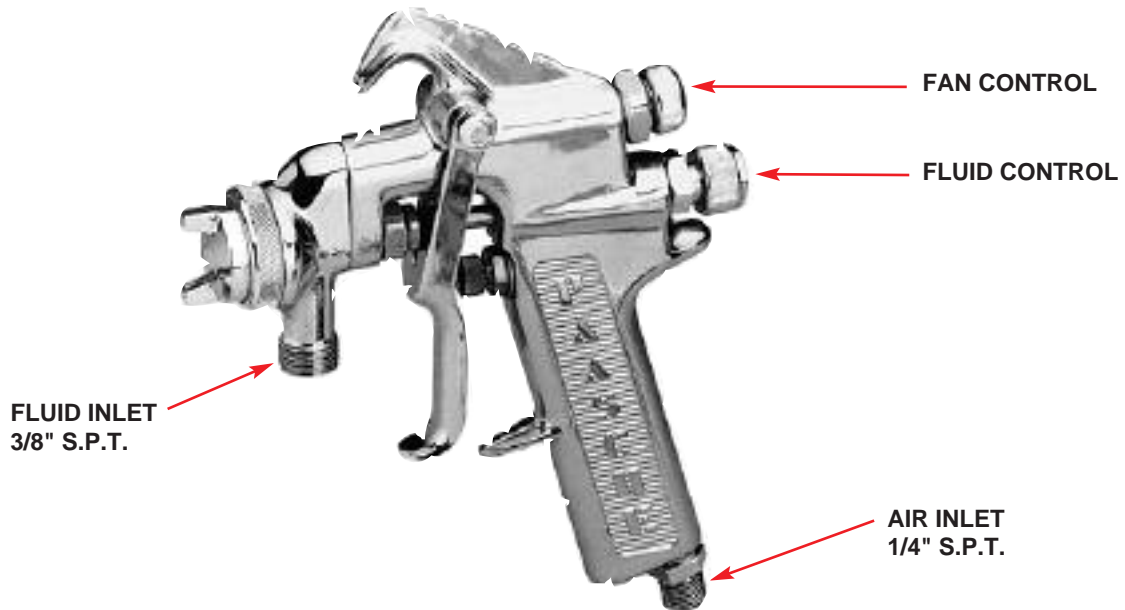
# Paasche®

## Model 300HF HVLP-Manual Spray Gun

OPERATING INSTRUCTION AND REPLACEMENT PARTS

INSTRUCTIONS AND PARTS LIST 300H-10/2007  
Supersedes Instruction & Parts List 300H-5/2006

**WARNING:** Spray materials may be harmful if inhaled or allowed to come into contact with the skin or eyes. Consult the product label and Material Safety Data Sheet supplied for the spray material. Follow all safety precautions.  
**CAUTION:** Well Ventilated Area Required to remove fumes, dust or overspray. Secure airhose and fluid hose wrench tight for safety and to prevent leaks.  
**Maximum Air Pressure 55 P.S.I.**  
**Maximum Fluid Pressure 45 P.S.I.**



### DESCRIPTION:

The Model 300HF Manual Spray Gun is a **High Volume Low Pressure** production Spray Gun.

**Note: Extensions Require Pressure Material Feed**

### CONNECTIONS AND PACKINGS:

Standard Straight Pipe Threads.

- AIR 1/4" S.P.T.
- FLUID 3/8" S.P.T.  
(Used with CL38 Qt. Container Assembly)
- PACKINGS Self-Lubricating Teflon®

### OPERATION:

1. Check both Packing Nuts for tightness.
2. Connect Hose from air supply to Air Inlet Fitting.
3. Connect Fluid Supply (Siphon Cup or Hose) to Fluid Inlet.
4. Tighten all Hose Connections securely.
5. Adjust air pressure to desired amount at the Air Regulator.
6. Adjust Fluid Volume by Turning the Fluid Control Screw to the left or right.

7. Adjust to proper spray pattern by turning the Fan Control Screw to the right or left.
8. Maintain and clean the gun after each use in accordance with the following instructions.

### MAINTENANCE:

Lubrication requirements of the Model 300HF Manual Spray Gun have been reduced to a minimum. The Packings are self-lubricating, and contact with solvents will not affect them. The trigger pivot points should be oiled as necessary to ease the trigger action. The fan control assembly should be lightly wiped with lubricating grease monthly to preserve the sealing qualities of the "O" Ring.

### CLEANING:

Cleaning the Model 300HF is simple. Merely flush clean solvent through the fluid passages of the Spray Gun and wipe off the outside with clean solvent. Never leave the entire Spray Gun immersed in solvent. Do not use any caustic or alkaline solutions for cleaning because they will attack the aluminum portions of the Spray Gun. Dirty Air Caps and Tips should be cleaned by soaking in solvent and blown clean with air. Reaming of parts should only be done with soft implements such as a match stick or broom bristle.

### Paasche Airbrush Company

4311 North Normandy Avenue  
Chicago, IL 60634-1395

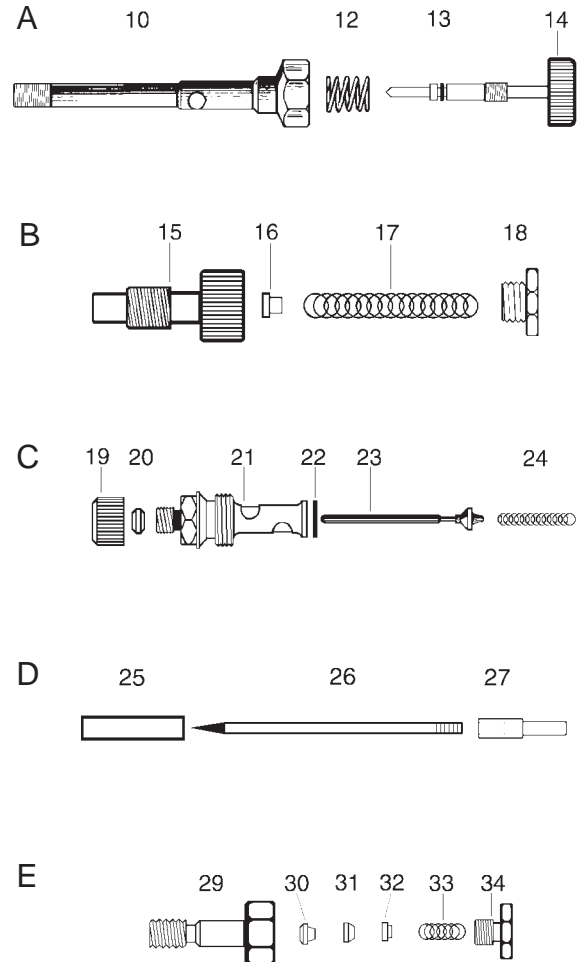
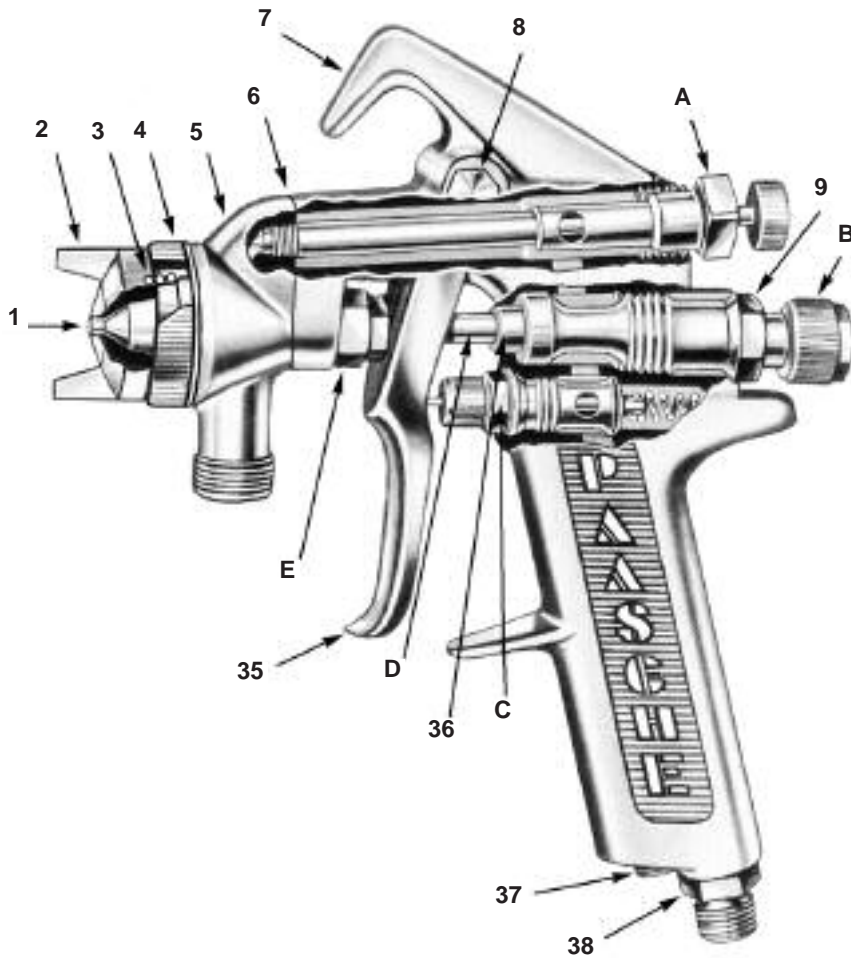
Phone: 773-867-9191 • Fax: 773-867-9198

Website: [paascheairbrush.com](http://paascheairbrush.com)

E-Mail: [info@paascheairbrush.com](mailto:info@paascheairbrush.com)

Printed in the U.S.A.

**HIGH VOLUME LOW PRESSURE**



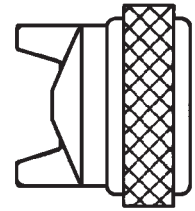
**Model 300HF Manual Spray Gun Replacement Parts**

No.	Part No.	Description	No.	Part No.	Description
1.	U-	Tip U-00, U-0, U-2 (Select Size)	<b>C. AIR VALVE ASSEMBLY</b>		
2.	56FA-	Air Cap 4-12, 4-15, 4-20-3 (Select Size)	19.	20-1160	Packing Nut
3.	U-2639S	Sleeve & Spring	20.	20-1170	Packing Washer
4.	U-1649	Aircap Nut	21.	20-1130	Air Supply Valve Body
5.	20-1459	Fluid Body	22.	00-3583	Seal
6.	00-3000	Fluid Body Gasket	23.	20-1020	Valve Head & Pin Assembly
7.	20-1489H	Gun Body <b>High Volume Low Pressure</b>	24.	03-1001	Air Valve Spring
8.	20-1300	Trigger Shoulder Screw	<b>D. NEEDLE VALVE ASSEMBLY</b>		
9.	20-1230	Material Valve Body	25.	20-1530	Fluid Needle Guide
<b>A. FAN CONTROL HOUSING &amp; NEEDLE ASSEMBLY</b>			26.	20-1159	Fluid Needle
10.	20-1410	Air Control Housing	27.	20-1196	Needle Body
12.	03-1013	Spring	20-1140		Fluid Needle Body (Extensions only)
13.	H-006	"O" Ring	20-1190		Fluid Needle Extension (Extensions only)
14.	20-1439H	Air Control Needle Assembly <b>HVLV</b>	<b>E. NEEDLE PACKING ASSEMBLY</b>		
<b>B. MATERIAL CONTROL ASSEMBLY</b>			29.	20-1220	Front Packing Gland
15.	20-1100	Spring Housing	30.	20-1460	"V" Packing
16.	20-1090	Spring Follower	31.	20-1470	"V" Packing Ring
17.	03-1000	Valve Spring	32.	20-1210	Packing Follower-Brass
18.	20-1110	Spring Housing Cap	33.	U-1427	Packing Spring
			34.	20-1200	Packing Nut-Brass
			35.	20-1070	Trigger Assembly
			36.	20-1360	Fluid Needle Bearing
			37.	20-1080	1/8" NPT Pipe Plug
			38.	20-1120	Air Connection Fitting

**EXTERNAL FAN PATTERN**

- **Application:** High Volume Low Pressure - Production Spraying.
- **Size available:** 0.
- **Fluid Viscosity:** See Fluid Guide Below (6 to 8 C.F.M. @ 45 or 55 P.S.I.)

1. **U-** Tip- Stainless Steel (Select 0)
2. **56FA-** Aircap Body (Select 4-15)
3. **U-2639S** Sleeve & Spring
4. **U-1649** Aircap Nut



26. **20-1159** Needle- Stainless Steel (Not included with Head)

Application	Fluid to be used see Fluid Guide	300HF Model S = Stainless	Aircap NO. S = Stainless	Fluid Tip		Minimum C.F.M. @		Air Comp. H.P.	Manual Needle
				NO.	Orifice Size	45	55		
High Volume Low Pressure Manual Spray Gun with Maximum Inlet Pressure of 55 p.s.i. and Head Pressure of 10 p.s.i.	AB	300HF	56FA-4-15	0	.055	6	7	2	20-1159

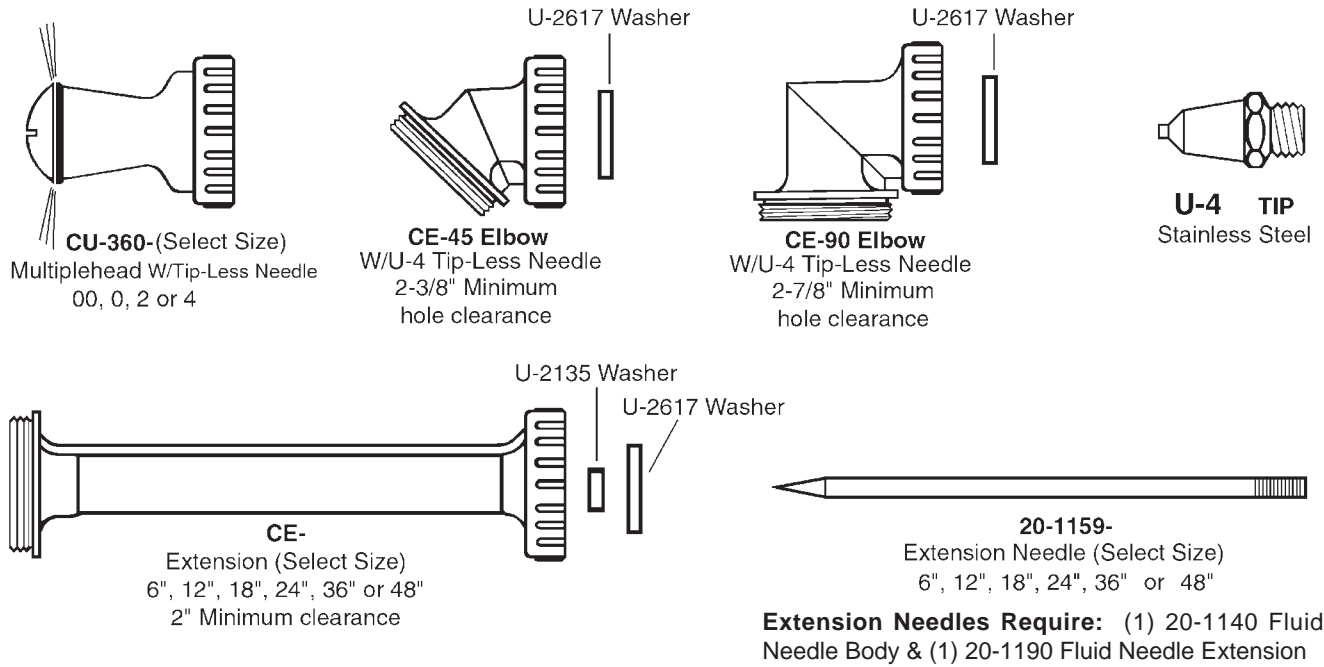
**FLUID GUIDE**

**A** Very Thin—Light Viscosity (0)    **B** Thin—Light Viscosity (0)

**U - Tip Orifice Sizes:** **U-0** (.055)

**EXTENSIONS**

Extensions, Aircaps and Elbows for Paasche Automatic and Manual Spray Guns further increase the range of applications for coating and spray painting hard-to-reach places such as the inside surfaces of tubular objects, recesses and containers. High areas may be sprayed without using ladders or scaffolding. Extensions do require a needle of the same length to shut off material instantly when trigger is released. **NOTE: Pressure Feed is required for all Extensions.**



**MATERIAL FEED CONTAINERS- Siphon**

 <p><b>34SC</b> 1/2 Pint .237 Liter Screw Cover Cup Assembly</p>	 <p><b>30SC</b> One Quart .946 Liter Screw Cover Cup Assembly</p>	 <p><b>CL38</b> One Quart .946 Liter Cam-Lock Cover Cup Assembly</p>	 <p><b>52P</b> One Quart .946 Liter Screw Cover Pressure Feed Cup Assembly</p>
--	--	---	---