

Paasche®

Model 300

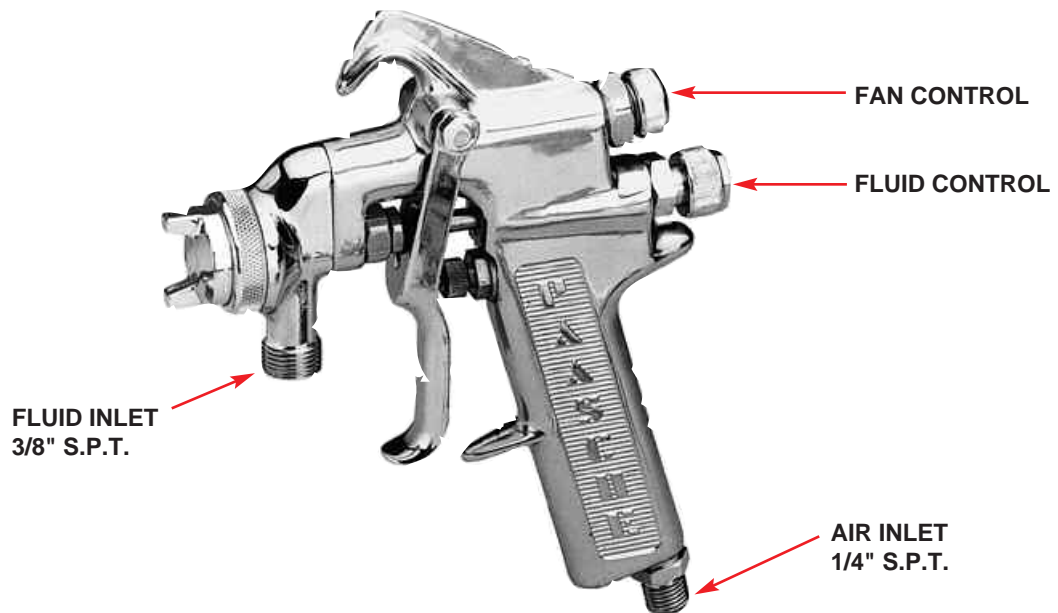
Manual Spray Gun

OPERATING INSTRUCTION AND REPLACEMENT PARTS

WARNING: Spray materials may be harmful if inhaled or allowed to come into contact with the skin or eyes. Consult the product label and Material Safety Data Sheet supplied for the spray material. Follow all safety precautions.

CAUTION: Well Ventilated Area Required to remove fumes, dust or overspray. Secure airhose and fluid hose wrench tight for safety and to prevent leaks.

Maximum Air Pressure 100 P.S.I.
Maximum Fluid Pressure 45 P.S.I.



DESCRIPTION:

The Model 300 Manual Spray Gun is a production Spray Gun which can utilize a complete range of materials from light lacquers to heavy synthetics.

Note: Extensions Require Pressure Material Feed.

CONNECTIONS AND PACKINGS:

Standard Straight Pipe Threads.

- AIR 1/4" S.P.T.
- FLUID 3/8" S.P.T.
(Used with CL38 Qt. Container Assembly)
- PACKINGS Self-Lubricating Teflon®

OPERATION:

1. Check both Packing Nuts for tightness.
2. Connect Hose from air supply to Air Inlet Fitting.
3. Connect Fluid Supply (Siphon Cup or Hose) to Fluid Inlet.
4. Tighten all Hose Connections securely.
5. Adjust air pressure to desired amount at the Air Regulator.

6. Adjust Fluid Volume by Turning the Fluid Control Screw to the left or right.
7. Adjust to proper spray pattern by turning the Fan Control Screw to the right or left.
8. Maintain and clean the gun after each use in accordance with the following instructions.

MAINTENANCE:

Lubrication requirements of the Model 300 Manual Spray Gun have been reduced to a minimum. The Packings are self-lubricating, and contact with solvents will not affect them. The trigger pivot points should be oiled as necessary to ease the trigger action. The fan control assembly should be lightly wiped with lubricating grease monthly to preserve the sealing qualities of the "O" Ring.

CLEANING:

Cleaning the Model 300 is simple. Merely flush clean solvent through the fluid passages of the Spray Gun and wipe off the outside with clean solvent. Never leave the entire Spray Gun immersed in solvent. Do not use any caustic or alkaline solutions for cleaning because they will attack the aluminum portions of the Spray Gun. Dirty Air Caps and Tips should be cleaned by soaking in solvent and blown clean with air. Reaming of parts should only be done with soft implements such as a match stick or broom bristle.

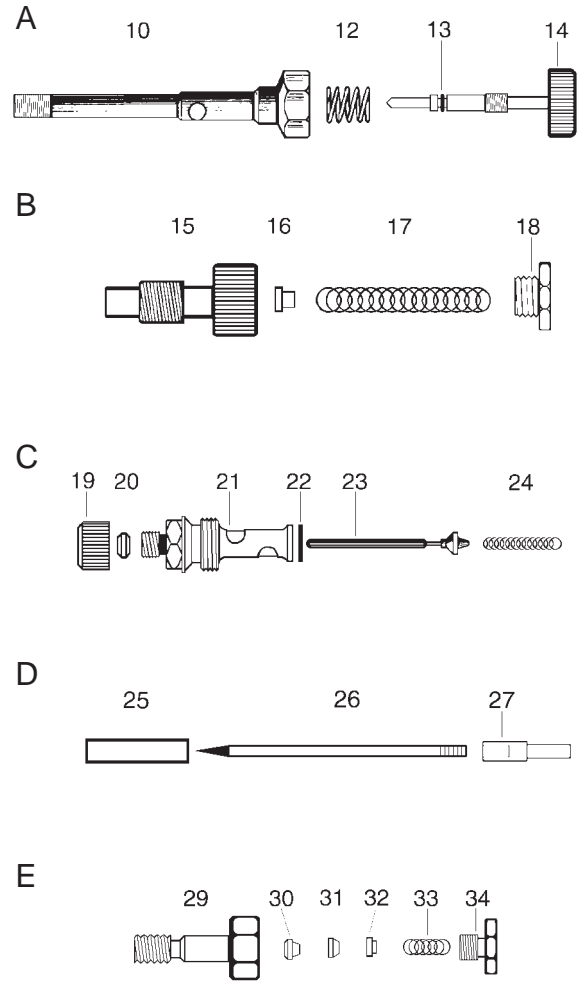
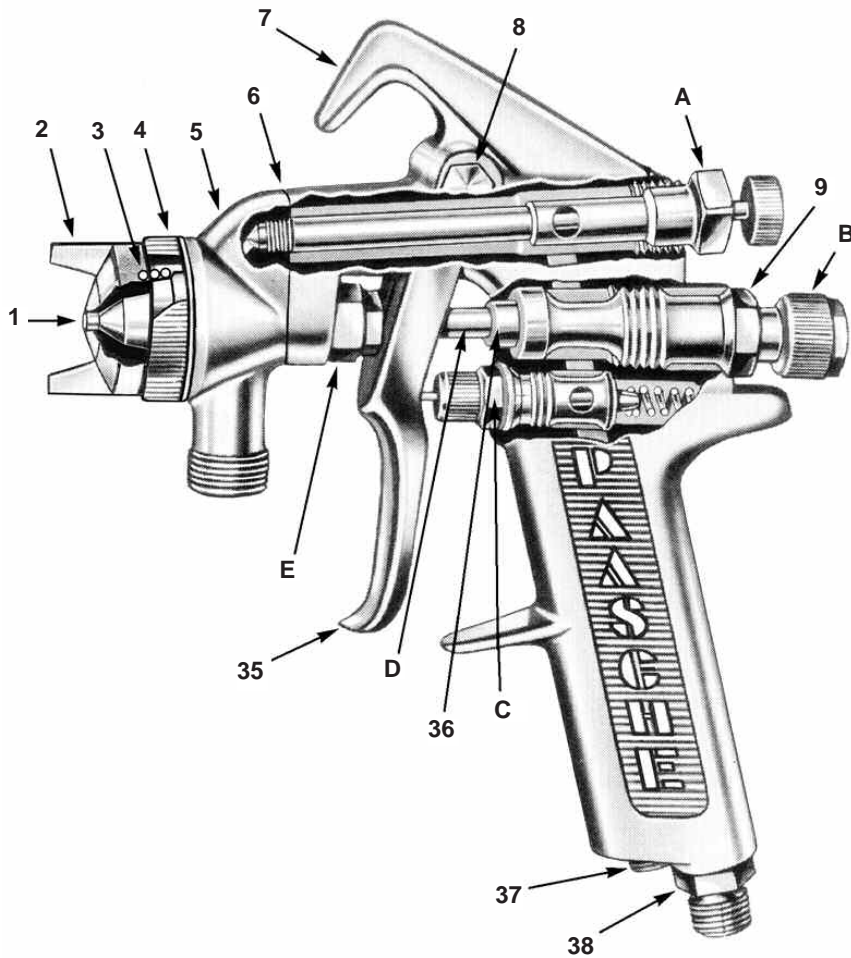
Paasche Airbrush Company

4311 North Normandy Avenue
Chicago, IL 60634-1395

Phone: 773-867-9191 • Fax: 773-867-9198

Website: paascheairbrush.com

E-Mail: info@paascheairbrush.com



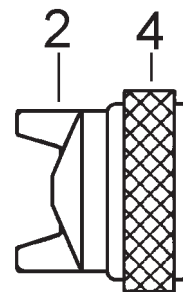
Model 300 Manual Spray Gun Replacement Parts (Shown with CF Multiplehead)

No.	Part No.	Description	No.	Part No.	Description
1.	U-	Tip (Select Size)	C. AIR VALVE ASSEMBLY		
2.	56FA-	Air Cap (Select Size)	19.	20-1160	Packing Nut
3.	U-2639S	Sleeve & Spring	20.	20-1170	Packing Washer
4.	U-1649	Aircap Nut	21.	20-1130	Air Supply Valve Body
5.	20-1459	Fluid Body	22.	00-3583	Seal
6.	00-3000	Fluid Body Gasket	23.	20-1020	Valve Head & Pin Assembly
7.	20-1480	Gun Body	24.	03-1001	Air Valve Spring
8.	20-1300	Trigger Shoulder Screw	D. NEEDLE VALVE ASSEMBLY		
9.	20-1230	Material Valve Body	25.	20-1530	Fluid Needle Guide
A. FAN CONTROL HOUSING & NEEDLE ASSEMBLY			26.	20-1159	Fluid Needle
10.	20-1410	Air Control Housing	27.	20-1196	Needle Body
12.	03-1013	Spring		20-1140	Fluid Needle Body (Extensions only)
13.	H-006	"O" Ring		20-1190	Fluid Needle Extension (Extensions only)
14.	20-1430	Air Control Needle Assembly	E. NEEDLE PACKING ASSEMBLY		
B. MATERIAL CONTROL ASSEMBLY			29.	20-1220	Front Packing Gland
15.	20-1100	Spring Housing	30.	20-1460	"V" Packing
16.	20-1090	Spring Follower	31.	20-1470	"V" Packing Ring
17.	03-1000	Valve Spring	32.	20-1210	Packing Follower-Brass
18.	20-1110	Spring Housing Cap	33.	U-1427	Packing Spring
			34.	20-1200	Packing Nut-Brass
			35.	20-1070	Trigger Assembly
			36.	20-1360	Fluid Needle Bearing
			37.	20-1080	1/8" NPT Pipe Plug
			38.	20-1120	Air Connection Fitting

External - Fan Pattern Components

- **Application:** CF- Broad coverage - High Production.
- **Sizes:** 000-3, 00-4, 00-4-6, 0-6, 0-9, 2-8, 4-10, 4-15.
- **Fluid Viscosity:** See Fluid Guide Below (3 to 24 C.F.M. @ 40 or 50 P.S.I.)
 1. **U-** Tip- Stainless Steel (Select Size 000,00,0,2,4)
 2. **56FA-** Aircap Body (Select Size above)
 3. **U-2639S** Sleeve & Spring
 4. **U-1649** Aircap Nut

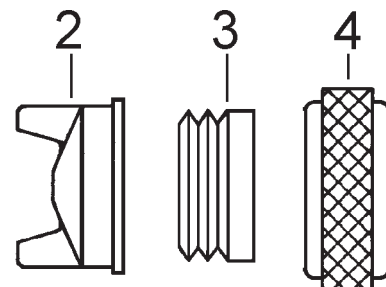
- 26. **20-1159** Needle- Stainless Steel (Not included with Head)



External - Fan Pattern Stainless Steel Components

- **Application:** Corrosive materials and Latex (Water based materials).
- **Sizes:** 0-6, 0-9, 2-8, 4-10, 4-20, 4-20-3.
- **Fluid Viscosity:** See Fluid Guide Below (4 to 20 C.F.M. @ 40 or 50 P.S.I.)
 1. **U-** Tip- Stainless Steel (Select Size 0, 2, or 4)
 2. **56SFA-** Aircap Body- Stainless Steel (Select Size above)
 3. **U-2639P** Poly Sleeve (No Spring Needed)
 4. **U-1649** Aircap Nut

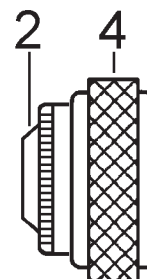
- 26. **20-1159** Needle- Stainless Steel



Internal - Round Pattern Components

- **Application:** Narrow trim, inside crevice, dot, line, High Production.
- **Sizes:** 00-3, 0-4, 2-5, 4-6.
- **Fluid Viscosity:** See Fluid Guide Below (3 to 6 C.F.M. @ 40 P.S.I.)
 2. **56RA-** Aircap Body (Select Size above)
 4. **U-1649** Aircap Nut
 1. **U-** Tip- Stainless Steel (Select Size 00,0,2, or 4)

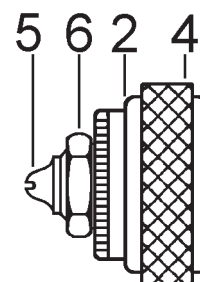
- 26. **20-1159** Needle- Stainless Steel



Internal Mix Fan Pattern Components

- **Application:** Broad coverage with less mist and half the air volume required for external atomizing multipleheads.
Should only be used with pressure fed materials.
- **Sizes:** 0-4, 2-5.
- **Fluid Viscosity:** See Fluid Guide Below (4 to 6 C.F.M. @ 40 P.S.I.)
 1. **U-** Tip- Stainless Steel (Select Size: 0 or 2)
 2. **56RIFA-** Aircap Body (Select Size above)
 4. **U-1649** Aircap Nut
 5. **CSC** Slotted Aircap (Select Size: 0 or 2)
 6. **AU-16** Aircap Nut

- 26. **20-1159** Needle- Stainless Steel



FLUID GUIDE

B Thin—Light Viscosity (000, 00, 0, & 2) **C** Medium Viscosity (0, 2, & 4) **D** Heavy Viscosity (4 only)

U - Tip Orifice Sizes: **U-000** (.028), **U-00** (.040), **U-0** (.055), **U-2** (.073), **U-4** (.093)

MATERIAL FEED CONTAINERS- Siphon



34SC
1/2 Pint
.237 Liter
Screw Cover
Cup Assembly



30SC
One Quart
.946 Liter
Screw Cover
Cup Assembly



CL38
One Quart
.946 Liter
Cam-Lock Cover
Cup Assembly



52P
One Quart
.946 Liter
Screw Cover
Pressure Feed
Cup Assembly