

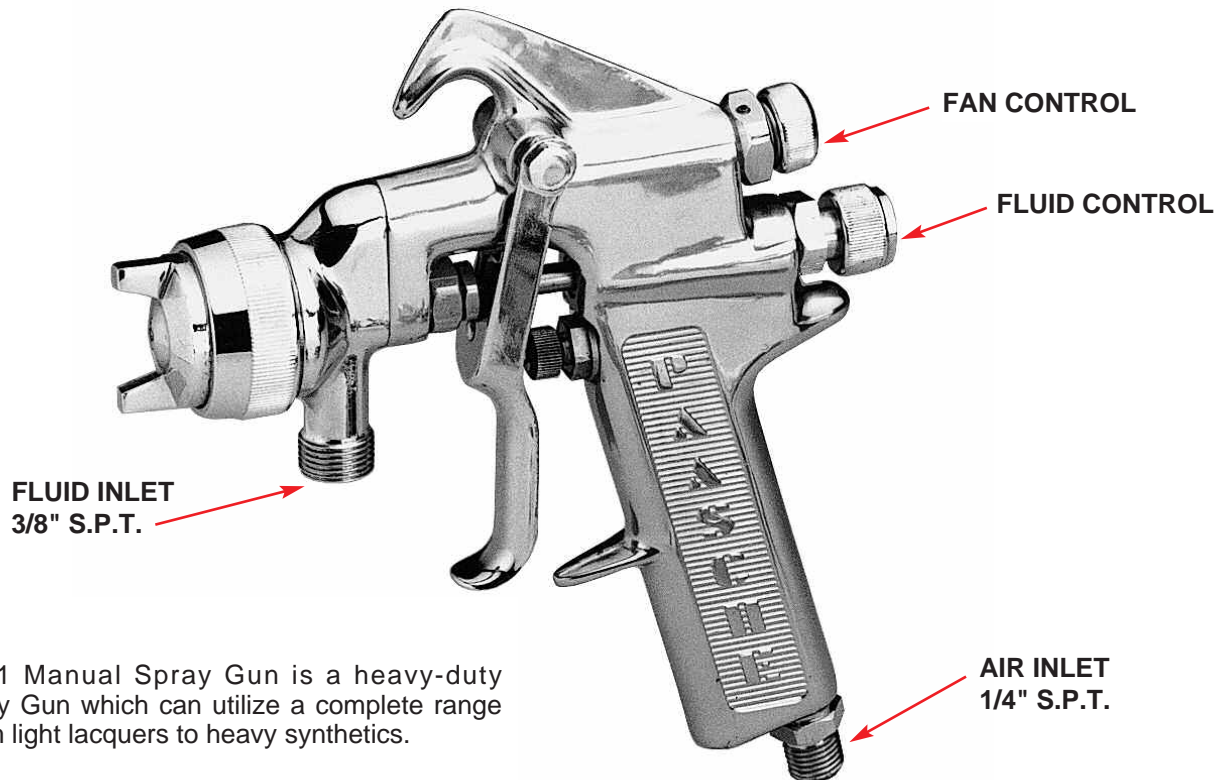
# Paasche®

## 211 Manual Spray Gun

OPERATING INSTRUCTION AND REPLACEMENT PARTS

INSTRUCTIONS AND PARTS LIST 211-10/2007  
Supersedes Instructions and Parts List 211-5/2006

**WARNING:** Spray materials may be harmful if inhaled or allowed to come into contact with the skin or eyes. Consult the product label and Material Safety Data Sheet supplied for the spray material. Follow all safety precautions.  
**CAUTION:** Well Ventilated Area Required to remove fumes, dust or overspray. Secure airhose and fluid hose wrench tight for safety and to prevent leaks.  
**Maximum Air Pressure 100 P.S.I.**  
**Maximum Fluid Pressure 45 P.S.I.**



### DESCRIPTION:

The Model 211 Manual Spray Gun is a heavy-duty production Spray Gun which can utilize a complete range of materials from light lacquers to heavy synthetics.

### CONNECTIONS AND PACKINGS:

Standard Straight Pipe Threads.

- AIR 1/4" S.P.T.
- FLUID 3/8" S.P.T.  
(Used with CL38 Qt. Container Assembly)
- PACKINGS Self-Lubricating Teflon®

### OPERATION:

1. Check all Packing Nuts for tightness.
2. Connect Hose from air supply to Air Inlet Fitting.
3. Connect Fluid Supply (Siphon Cup or Hose) to Fluid Inlet.
4. Tighten all Hose Connections securely.
5. Adjust air pressure to desired amount at the Air Regulator.
6. Adjust Fluid Volume by Turning the Fluid Control Screw to the left or right.
7. Adjust to proper spray pattern by turning the Fan Control Screw to the right or left.
8. Maintain and clean the gun after each use in accordance with the following instructions

### MAINTENANCE:

Lubrication requirements of the Model 211 Manual Spray Gun have been reduced to a minimum. The Packings are self-lubricating, and contact with solvents will not affect them. The trigger pivot points should be oiled as necessary to ease the trigger action. The fan control assembly should be lightly wiped with lubricating grease monthly to preserve the sealing qualities of the "O" Ring.

### CLEANING:

Cleaning the Model 211 is simple. Merely flush clean solvent through the fluid passages of the Spray Gun and wipe off the outside with clean solvent. Never leave the entire Spray Gun immersed in solvent. Do not use any caustic or alkaline solutions for cleaning because they will attack the aluminum portions of the Spray Gun. Dirty Air Caps and Tips should be cleaned by soaking in solvent and blown clean with air. Reaming of parts should only be done with soft implements such as a match stick or broom bristle.

### Paasche Airbrush Company

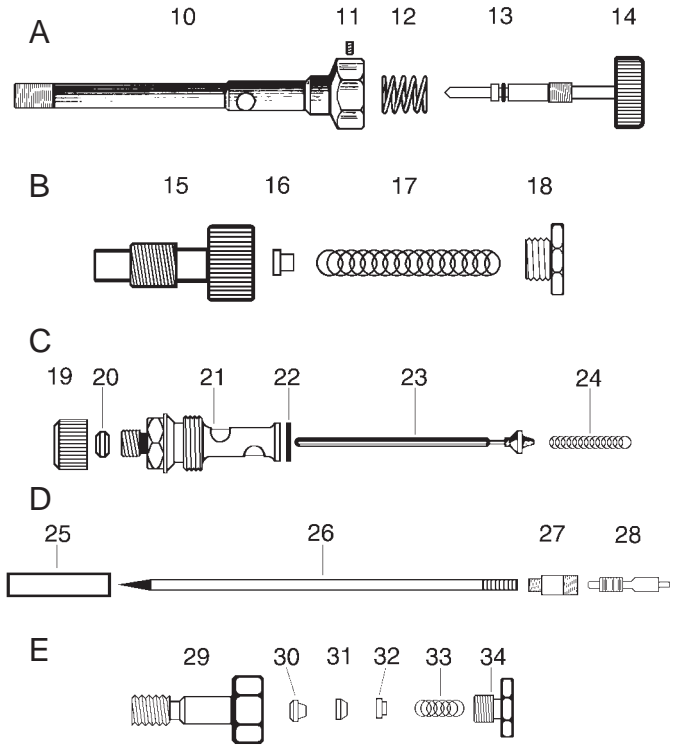
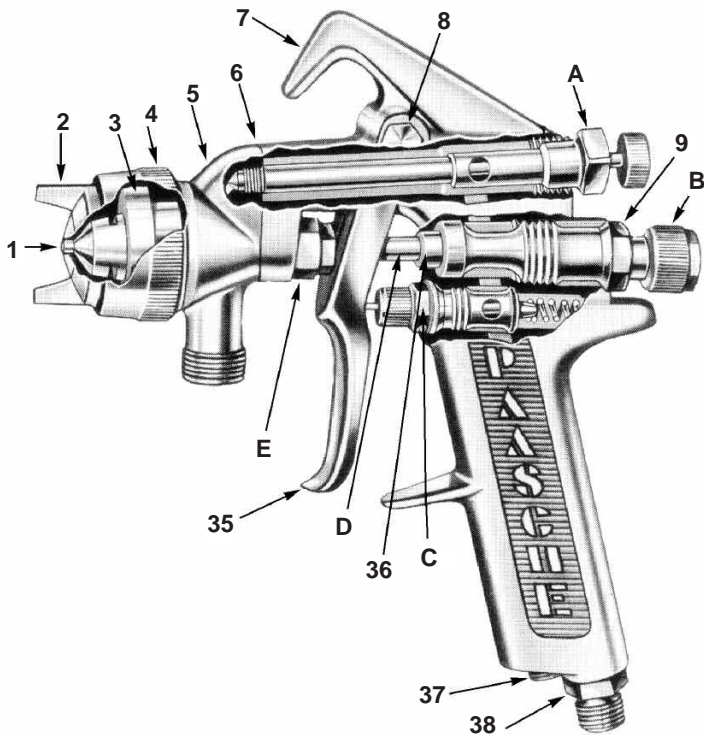
4311 North Normandy Avenue  
Chicago, IL 60634-1395

Phone: 773-867-9191 • Fax: 773-867-9198

Website: [paascheairbrush.com](http://paascheairbrush.com)

E-Mail: [info@paascheairbrush.com](mailto:info@paascheairbrush.com)

Printed in the U.S.A.



**Model 211 Manual Spray Gun Replacement Parts**

No.	Part No.	Description
1.	20-	Fluid Tip (Select Size—See chart below)
2.	20-	Air Cap (Select Size—See chart below)
3.	20-1901	Adapter
4.	20-1900	Retaining Ring
5.	20-1450	Fluid Body
6.	00-3000	Fluid Body Gasket
7.	20-1480	Gun Body
8.	20-1300	Trigger Shoulder Screw
9.	20-1230	Material Valve Body
<b>A. FAN CONTROL HOUSING &amp; NEEDLE ASSEMBLY</b>		
10.	20-1410	Air Control Housing
11.	02-1101EC	Set Screw
12.	03-1013	Spring
13.	H-006	"O" Ring
14.	20-1430	Air Control Needle Assembly
<b>B. MATERIAL CONTROL ASSEMBLY</b>		
15.	20-1100	Spring Housing
16.	20-1090	Spring Follower
17.	03-1000	Valve Spring
18.	20-1110	Spring Housing Cap

No.	Part No.	Description
<b>C. AIR VALVE ASSEMBLY</b>		
19.	20-1160	Packing Nut
20.	20-1170	Packing Washer
21.	20-1130	Air Supply Valve Body
22.	00-3583	Seal
23.	20-1020	Valve Head & Pin Assembly
24.	03-1001	Air Valve Spring
<b>D. NEEDLE VALVE ASSEMBLY</b>		
25.	20-1530	Fluid Needle Guide
26.	20-1150	Fluid Needle
27.	20-1140	Fluid Needle Body
28.	20-1190	Fluid Needle Extension
<b>E. NEEDLE PACKING ASSEMBLY</b>		
29.	20-1220	Front Packing Gland
30.	20-1460	"V" Packing
31.	20-1470	"V" Packing Ring
32.	20-1210	Packing Follower-Brass
33.	U-1427	Packing Spring
34.	20-1200	Packing Nut-Brass
35.	20-1070	Trigger Assembly
36.	20-1360	Fluid Needle Bearing
37.	20-1080	1/8" NPT Pipe Plug
38.	20-1120	Air Connection Fitting

**Model 211 Manual Spray Heads, Aircaps, Tips and Needles**

Applications	Fluid to be used Refer Below	Spray Gun Model	Aircap Size	Fluid Tip		Minimum C.F.M. at P.S.I. 50	Air Comp. (H.P.)	Needle Type	Method Fluid Feed
				Number	Orifice Size			Manual	
Production Spray Gun handles wide range of fluids from light lacquers to heavy synthetics	A B	211 Manual Spray Gun	20-1211	20-1111	.040	6.0	1 1/2	20-1150	All Siphon or pressure
	B C		20-1255	20-1122	.055	6.0			
	D E		20-1233	20-1133	.073	8.0			
	C D		20-1244	20-1144	.093	10.0			

A Very Thin—Light Viscosity  
 B Thin—Light Viscosity

C Medium Viscosity  
 D Heavy Viscosity

E Thin Viscosity—Abrasives