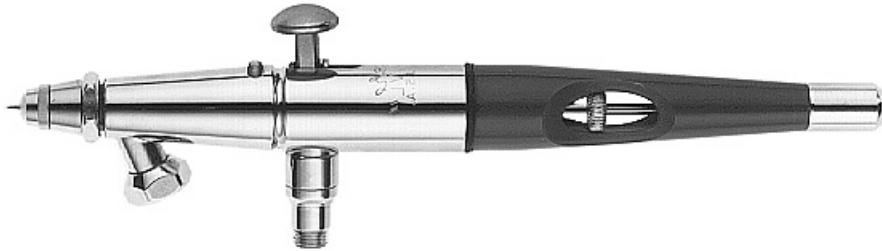


VLSTPRO - CLASSIC

Siphon Feed - Internal Mix - Double Action Airbrush

OPERATING INSTRUCTIONS AND REPLACEMENT PARTS

WARNING: Spray materials may be harmful if inhaled or allowed to come into contact with the skin or eyes. Consult the product label and Material Safety Data Sheet supplied for the spray material. Follow all safety precautions.
CAUTION: Well Ventilated Area Required to remove fumes, dust or overspray. Secure airhose to Airbrush with V-62 Wrench for safety and to prevent air leaks.
Maximum Air Pressure 75 P.S.I.



INTRODUCTION:

With all of the modifications we learned from the professional artists that use the VL, we created the ultimate painting machine! The **VLSTPRO** is a significant upgrade to the classic **VL** with features that airbrushers of all levels will appreciate, such as the **Rounded Trigger Button** that rolls under your finger for greater comfort and better control. The new **Paint Picker Aircap** lets you clean any accumulation of paint off the tip and needle with a quick pinch of the fingers. The **Trigger Guide** has been lengthened for increased paint flow at maximum draw, and the **Cut-Away Handle** allows quick pullback to blow out clogs. A **Threaded Bottle Connector** fitting locks onto the bottle stem for worry-free one-handed painting-the bottle will not fall off once fastened properly. And inside, it's still the same great **VL** that professionals have trusted for decades. Available as a #3 or a #5.

AIRCAP, AIRCAP BODY, TIP and NEEDLE SIZES

VLSTPRO Airbrush: Very Thin to Heavy Fluids

VLPP-3 or 5 Multiplehead L/Needle

PP	Paint Picker Aircap (One Size)
VLB	Aircap Body (One Size)
VLT-3 or 5	Tip (Select Size)

VLN-3 or 5	Needle (Select Size) not included with above Multiplehead
-------------------	---

PRESSURES:

- 20 lbs. or less for stipple and granulated effects.
- 30 lbs. for medium consistency water colors, inks & dyes
- 35 lbs. or more for heavier fluids such as: reduced lacquers, varnishes, paints or ceramic glaze.

OPERATING INSTRUCTIONS:

1. Attach airhose to air supply and allow to blow a few seconds at full pressure. For safety, **Shut Off** air supply before attaching to airbrush. This procedure will remove dirt from airline and hose.
2. **Attach airhose coupling to airbrush with V-62 Wrench.**
3. Attach the color cup or bottle assembly to color socket. Use a firm twisting motion to secure bottle assembly and lock in place with threaded nut on Airbrush color socket.
4. **Remove Head Protecting Cap-#1.**
5. Press down on Finger Button-#15 to release air and pull back on button to control quantity of color.
6. If pre-regulated amount of fluid is desired adjust Line Adjusting Nut-#10. This control will give the operator the same amount of fluid each time the Finger Button-#15 is depressed.
7. To spray a fine line without heavy ends, start moving the airbrush without release of color. Then start the color at the beginning of line and stop the color at the end, but continue the motion of the airbrush after the color has stopped.
8. Practice this movement until you can spray a fine line or a broad pattern without heavy build up at the beginning or end of your strokes.
9. Speed of movement controls density of color and fading effects at beginning and end of strokes.
10. For detail, hold the airbrush close to the surface and then push down for air and pull back very slowly on the Finger Button-#15 for color.
11. For background work and broad effects, hold the airbrush away from work and pull back on Finger Button-#15 to release required amount of color.
12. For more instruction see the "22 Airbrush Lessons for Beginners" booklet enclosed with your airbrush.

CLEANING PROCEDURE

1. Pour remaining color back into its container.
2. Rinse and wipe color cup or bottle assembly clean.
3. Spray a small amount of water/solvent through the airbrush until it comes out clear.

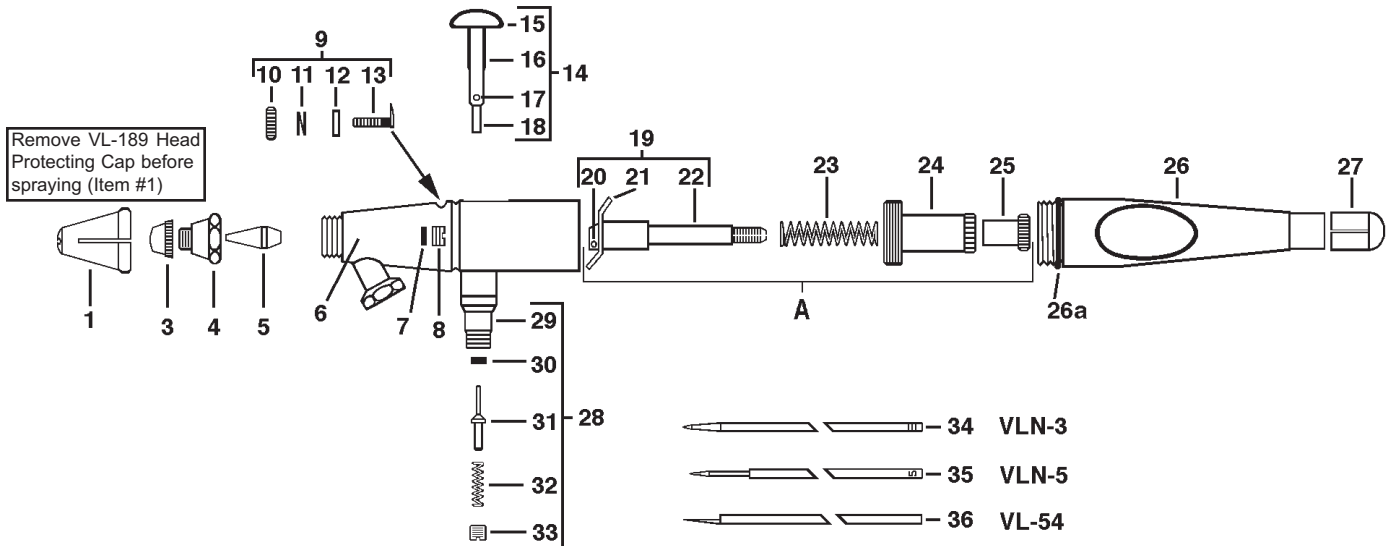
Paasche Airbrush Company

4311 North Normandy
Chicago, IL 60634-1395

Phone: 773-867-9191 • Fax: 773-867-9198

Website: paascheairbrush.com

E-Mail: info@paascheairbrush.com



No.	Part No.	Description	No.	Part No.	Description
1	VL-189	Head Protecting Cap	A	VL-186	Needle Valve Assembly
3	PP	Paint Picker Aircap (One Size)	19	VL-191A	Rocker Assembly
4	VLB	Aircap Body	20	V-144	Pin
5	VLT-3 or 5	Tip (Select Size)	21	VL-142	Rocker
6	VLS-163	"VLS" Shell Assembly W/ VL-20	22	VL-137A	Needle Support
7	MU-61	Packing Washer	23	VL-140	Spring
8	MU-62	Packing Nut	24	VL-136A	Needle Adjusting Sleeve
9	VL-175	Line Adjustment Assembly	25	VL-141	Locknut
10	V-167	Line Adjustment Nut	26	VL-134C	Cut-Away Handle
11	V-168	Finger Stop Spring	26a	VL-207	"O" Ring
12	V-169	Friction Nut	27	VL-118	Protecting Cap
13	VL-166	Line Adjusting Screw	28	VL-176	Air Valve Assembly
14	VL-208	Finger Lever Assembly	29	VL-20	Valve Casing
15	VL-216	Finger Button	30	A-52	Valve Washer (Price/Doz.)
16	VL-165A	Finger Lever	31	H-21A	Valve Plunger
17	VL-58	Lever Pivot	32	A-22	Valve Spring
18	VL-59	Piston	33	A-23A	Air Valve Nut
			34	VLN-3	Needle
			35	VLN-5	Needle
			36	VL-54	Reamer (Optional)

ACCESSORIES

VL-127 Strainer

A-34 Hanger

V-62 Wrench

Moisture Trap Installation: OPEN TO REMOVE MOISTURE. AIR FLOW. MT Moisture Trap with Factory Installed Couplings. TO AIRBRUSH. AIR COMPRESSOR.

Red Plastic Hose HP-1/8"-8'

Braided Hose A-1/8"-8'

AC-20 Coupling

AC-1/8" Coupling

Do-It-Yourself Installation: The Moisture Trap is designed for use with all Airbrushes to remove water from the airline. To install-cut the airhose about 18" from the Airbrush coupling and insert as illustrated.