

Paasche®

INSTRUCTIONS AND PARTS LIST MIL-10/2007

Supersedes Instructions & Parts List MIL-5/2006

MILLENNIUM

DOUBLE ACTION-INTERNAL MIX

AIRBRUSH for the 21ST CENTURY

WARNING: Spray materials may be harmful if inhaled or allowed to come into contact with the skin or eyes. Consult the product label and Material Safety Data Sheet supplied for the spray material. Follow all safety precautions.
CAUTION: Well Ventilated Area Required to remove fumes, dust or overspray. Secure airhose to Airbrush with V-62 Wrench for safety and to prevent air leaks.
Maximum Air Pressure 75 P.S.I.



INTRODUCTION:

The *MILLENNIUM* features a polished chrome plated brass body with a red anodized aluminum Cut-Away Handle – thinner barreled body for easy grip – round trigger button that rolls under your finger for greater comfort and better control and the same **great airbrushing** results achievable with your Paasche “VL”.

OPERATING INSTRUCTIONS:

The *MILLENNIUM* is held in the same manner as a pen, with the index finger resting comfortably over the finger button.

1. Attach airhose to air supply and hold loose end away from eyes then allow air to blow a few seconds. Shut off air supply before attaching airhose to airbrush **wrench tight**. This procedure will remove dirt from air supply line and hose.
2. **Attach airhose coupling to airbrush with V-62 Wrench.**
3. For *MILLENNIUM* attach the color cup or bottle assembly to color socket using a firm twisting motion.
4. **Remove Head Protecting Cap Before Spraying-#1.**
5. Press down on Finger Lever Assembly-#8 to release air and pull back on button to control quantity of color.
6. To spray a fine line without heavy ends, start moving the airbrush without release of color then start the color at the beginning of the line and stop the color at the end, but continue the motion of the airbrush after the color has stopped.

7. Practice this movement until you can spray a fine line or a broad pattern without heavy build up at the beginning or end of your strokes.
8. Speed of movement controls density of color and fading effects at beginning and end of strokes.
9. For detail, hold the airbrush close to the surface then push down for air and pull back very slowly on the Finger Lever Assembly-#8 for color.
10. For background work and broad effects, hold the airbrush away from work and pull back on Finger Lever Assembly-#8 to release required amount of color.
11. For more instruction see the “22 Airbrush Lessons for Beginners” booklet enclosed with your airbrush.

CLEANING PROCEDURE:

1. Pour remaining color back into its container.
2. Rinse and wipe color cup or bottle assembly clean.
3. Spray a small amount of water/solvent through the airbrush until it comes out clear.
4. To back-flush color from the airbrush into the color bottle keep bottle assembly attached. Place one finger over the Aircap-#2 of the airbrush and release some air by depressing the Finger Lever Assembly-#8. This causes back pressure which induces a bubble action inside the airbrush and container. This helps clean the fluid passages.
5. See Page 2 for a complete list of all *MILLENNIUM* components. See Pages 2 & 3 for more instructions on cleaning and adjusting the *MILLENNIUM*.

Paasche Airbrush Company

4311 North Normandy Avenue

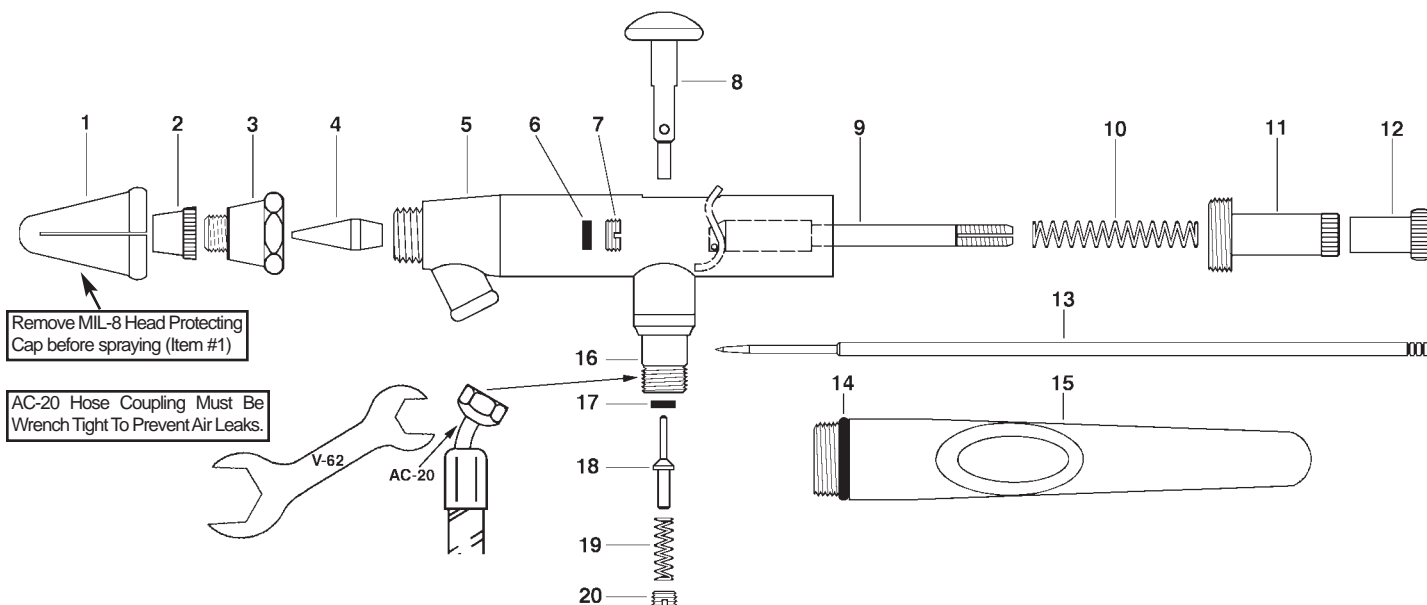
Chicago, IL 60634-1395

Phone: 773-867-9191 • Fax: 773-867-9198

Website: paascheairbrush.com

E-Mail: info@paascheairbrush.com

Printed in the U.S.A.



MILLENNIUM Components

NO.	PART	DESCRIPTION
1.	MIL-8	Head Protecting Cap
2.	VLA-3	Aircap
3.	VLB	Aircap Body
4.	VLT-3	Tip
5.	MIL-2	Shell Assembly
6.	MU-61	Packing Washer
7.	MU-62	Packing Nut
8.	MIL-3	Finger Lever Assembly
9.	MIL-4	Rocker Assembly
10.	V-140	Spring

NO.	PART	DESCRIPTION
11.	V-136A	Needle Adjusting Sleeve
12.	VL-141	Locknut
13.	VLN-3	Needle
14.	MIL-12	"O" Ring
15.	MIL-10	Cut-Away Aluminum Handle
16.	MIL-9	Valve Casing
17.	A-52	Valve Washer (Dozen)
18.	H-21A	Valve Plunger
19.	A-22	Valve Spring
20.	A-23A	Air Valve Nut

MILLENNIUM Adjusting & Cleaning Procedures

A. REMOVING/REPLACING THE NEEDLE AND HANDLE:

1. Unscrew the handle and loosen the Locknut-#12 by turning counterclockwise. Depress the Finger Lever Assembly-#8 and hold in Down position while removing or inserting the needle. This assures the needle moves freely through the finger lever. Gently remove the needle, rotating if necessary, DO NOT force out!
2. A loose needle can cause sputtering if there is any air leakage around the needle and Packing-#6. If there is no noticeable drag on the needle by the packing then tighten Nut-#7.
3. Inspect the condition of the needle. If it is bent or misshapen in any way, replace it with a new needle. A bent needle can damage or split the Tip-#4 causing bubbles or a rough spray pattern.
4. Hold Lever Assembly-#8 in DOWN position, insert the new needle into the Rocker Assembly-#9. Gently push needle through, rotating if necessary, until the needle's point is visible through the Tip-#4 of the airbrush.
5. Release Finger Lever Assembly-#8 and tighten Locknut-#12 by turning clockwise.
6. Replace the handle. Slowly screw the handle into the airbrush shell (1) counter-clockwise until you feel or hear a slight "click." Then rotate the handle (2) clockwise a

slight turn to meet the threads. Continue to screw handle into the airbrush shell until the threads are no longer visible.

B. REMOVING THE ROCKER ASSEMBLY:

1. Unscrew handle from the end of airbrush shell.
2. Remove Locknut-#12 and needle (see above-removing and replacing the needle and handle.)
3. Depress Finger Lever Assembly-#8 and Pull BACK. Keep in DOWN and BACK position, this secures Rocker Assembly-#9, while removing balance of parts.
4. Unscrew and remove Needle Adjusting Sleeve-#11 and Spring-#10.
5. Keep Finger Lever Assembly-#8 in DOWN position, allow finger lever to go FORWARD to release the Rocker Assembly-#9 for removal.
6. The Rocker Assembly-#9 should now be loose. Tilt the threaded end of the Rocker Assembly-#9 UPWARDS and gently remove from the back of the airbrush shell (see Illustration. **DO NOT FORCE REMOVAL OF ROCKER ASSEMBLY-#9!**)

C. REPLACING THE ROCKER ASSEMBLY:

1. Depress Finger Lever Assembly-#8 and hold in DOWN position.

2. Insert Rocker Assembly-#9 into airbrush shell with Rocker-portion in FORWARD Position.
3. When the top of the Rocker is visible through the opening in the top of the airbrush shell (by finger lever), pull BACK on Finger Lever Assembly-#8 until it touches the Rocker. Hold it there firmly, this secures the Rocker Assembly-#9 in place while re-assembling parts!
4. The Needle Support (part of the Rocker Assembly-#9) is visible through the end of the airbrush shell and will be loose.
5. Keep Finger Lever Assembly #8 with Rocker secured, in DOWN and BACK position, while replacing the Spring-#10 and Needle Adjusting Sleeve-#11.
6. Screw-in Needle Adjusting Sleeve-#11 until desired tension on the Finger Lever Assembly-#8 is achieved.
7. Replace the needle, with the Finger Lever Assembly-#8 in the DOWN position, then replace the Locknut-#12.
8. Release Finger Lever Assembly-#8. You should feel tension on the lever and it should spring-up if you depress and release it. If not, remove parts as above and repeat process.

D. REPLACING THE FINGER LEVER ASSEMBLY:

If the Finger Lever Assembly-#8 is removed or dislodged, it must be replaced inside the airbrush shell, before the Rocker Assembly-#9 and needle are re-inserted.

1. Hold Finger Lever Assembly-#8 so the opening in the lever is in-line with the opening in the end of the airbrush shell.
2. The Piston, which pivots on the end of the Finger Lever-#8, must be kept in DOWN position.
3. Insert Finger Lever Assembly-#8 with Piston straight DOWN through the opening in the top of the airbrush shell. View your progress through the end of the airbrush shell. Make sure the Piston goes STRAIGHT DOWN into the base opening of the Valve Casing-#16 (inside shell). Sometimes this takes several tries. Take your time.
4. Once the Piston of the Finger Lever Assembly-#8, has been inserted into the Valve Casing-#16, you will be able to press down on the Finger Lever Assembly-#8 and it will not fall out. Proceed to replace Rocker Assembly-#9 and balance of parts as above.

E. REPLACING THE TIP:

1. Remove handle, loosen Locknut-#12 and withdraw needle about one inch.
2. Un-screw the Aircap Body-#3 and remove. The Tip-#4 is now exposed and should be easily removed by hand.
3. Place a new Tip-#4 into position and tighten Aircap Body-#3 to airbrush shell using V-62 Wrench. Re-insert needle to forward position and tighten Locknut-#12.

F. ADJUSTING WORN PACKING WASHER:

1. If Packing Washer-#6 becomes worn or loose, refer to steps "B" and "D" for necessary parts removal.
2. Tighten Packing Nut-#7 with small screwdriver.
3. Replace needle and make sure Packing Nut-#7 is not too tight. A slight resistance to movement is needed when needle is passed through.
4. Completely re-assemble according to step "C".

G. USING A REAMER:

1. The Reamer- is *Optional Equipment* for use in removing

hardened color from inside tapered surface of the Tip-#4. It should be used only if color has become too hard for water or solvent to dissolve.

2. If it does become necessary to ream the Tip-#4, remove tip first. Insert Reamer- into the large opening of tip and with slight pressure turn reamer slowly to remove hardened particles.
3. Remove reamer and flush water or solvent through the tip to thoroughly clean away any loose particles.

H. CLEANING THE AIRBRUSH:

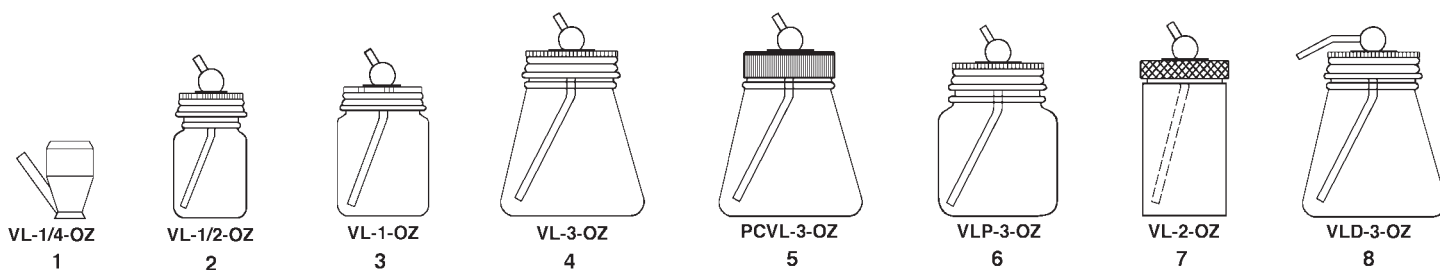
1. If Aircap-#2 is clogged with color, remove it from the Aircap Body-#3 and clean Aircap using a toothpick covered with cotton and saturated in water or solvent. Never use a sharp instrument or Reamer- to clean the Aircap.
2. It is not recommended to soak the entire airbrush shell in water or solvent. The Valve Washer-#17 can absorb the liquid, causing it to swell or dry out, resulting in air leakage inside the airbrush. Disassemble all parts before immersing in water or solvent.

I. TROUBLE SHOOTING:

1. If paint bubbles appear in the color cup, try tightening the Aircap Body-#3 and the Aircap-#2 with the V-62 Wrench-provided.
2. If paint is not spraying from the Aircap-#2 check the color cup and color inlet of the airbrush shell. Make sure they are free from any dried color, dirt or foreign matter.
3. An uneven or sputtering emission of color from the Aircap-#2 indicates that either the material being sprayed is too thick or the air pressure is too low.
4. An air leak, after the Finger Lever Assembly-#8 has been released, indicates that foreign matter has worked into the Air Valve-#16 or Valve Washer-#17 and damaged them.

J. TO RESOLVE THIS PROBLEM:

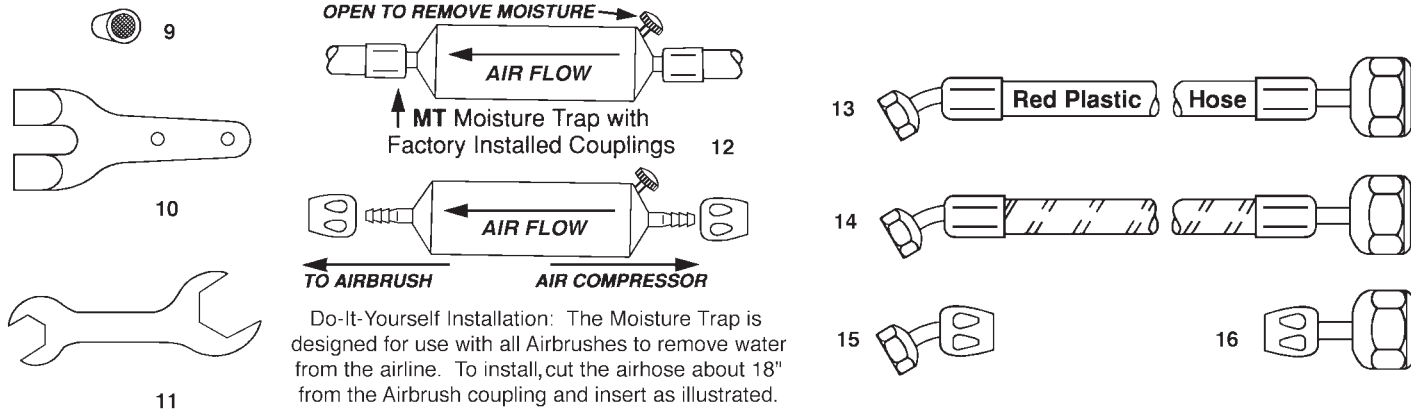
1. Remove Airhose from Airbrush and blow out any accumulation in the Valve Casing-#16.
2. Using a small screwdriver, remove Valve Nut-#20, Valve Spring-#19 and Valve Plunger-#18.
3. The old Valve Washer-#17 can be removed by inserting the blunt end of an airbrush needle through the top of the Valve Casing-#16 and pushing DOWN. To expose the top of the Valve Casing-#16, the Finger Lever Assembly-#8, Rocker Assembly-#9 and Needle-#13 must be removed.
NOTE: Cover sharp point of needle to avoid injury.
4. Blow out dirt from the Valve Casing-#16 and check valve seat for dirt and nicks. Valve seat is located inside the Valve Casing where the Valve Washer-#17 rests. If damaged, replace Valve Casing-#16.
5. Install a new Valve Washer-#17 onto the long thin side of the Valve Plunger-#18.
6. Re-assemble Valve Plunger-#18 followed By Valve Spring-#19 and Valve Nut-#20.
7. The Valve Nut-#20 must be screwed to a depth below the surface of the Valve Casing-#16.
8. It is not necessary for the Air Valve Casing-#16 to be removed except to replace if damaged.



MILLENNIUM CUP AND BOTTLE ASSEMBLIES

NO.	PART NO.	DESCRIPTION
1.	VL-1/4-OZ	Metal Color Cup (7cc)
2.	VL-1/2-OZ	Color Bottle Assembly (14.5cc)
	VL1/2	1/2 oz. Cover Assembly
	VF-17	Color Tube
3.	VL-1-OZ	Color Bottle Assembly (29cc)
	VL1	1 oz. Cover Assembly
	VF-17	Color Tube
	5-G	Gasket
4.	VL-3-OZ	Color Bottle Assembly (88cc)
	VL3	3 oz. Cover Assembly
	VF-14	Color Tube
	3-JG	Gasket

5.	PCVL-3-OZ	Nylon Cover/Metal Tube Bottle Assembly (88cc)
	PCVL3	Nylon Cover Assembly
	VF-14M	Metal Color Tube
	3-JG	Gasket
6.	VLP-3-OZ	Plastic Bottle Assembly (88cc)
	VL3	3 oz. Cover Assembly
	VF-14	Color Tube
	3-JG	Gasket
7.	VL-2-OZ	Aluminum Cup Assembly (60cc)
	VF-2-5/8	Color Tube
	3-JG	Gasket
8.	VLD-3-OZ	Decorator Bottle Assembly (88cc)
	VLD3	3 oz. Cover Assembly
	VF-14	Color Tube
	3-JG	Gasket



MILLENNIUM ACCESSORIES

NO.	PART NO.	DESCRIPTION
9.	VL-127	Strainer for Teflon®/White Color Tubes Only
10.	A-34	Hanger
11.	V-62	Wrench
12.	MT	Moisture Trap (Do-It-Yourself Installation)
13.	HP-1/8	PVC Red Plastic Airhose w/cplgs.
14.	A-1/8	Braided Airhose w/Couplings
15.	AC-20	1/8"-1/4"-40 Coupling (To Airbrush)
16.	AC-1/8	-1/4" Coupling (To Compressor)

Accessories not shown

PART NO.	DESCRIPTION
F-143	Red Plastic Handle
R-75AR	Reg. & Filter w/Gauge
VL-54	Reamer
D500	Air Compressor (115v.,60cyl.)
HSSB-22-16	Hobby-Shop Spray Booth
PP	Paint Picker Aircap
A-194	Deluxe Airbrush Hanger